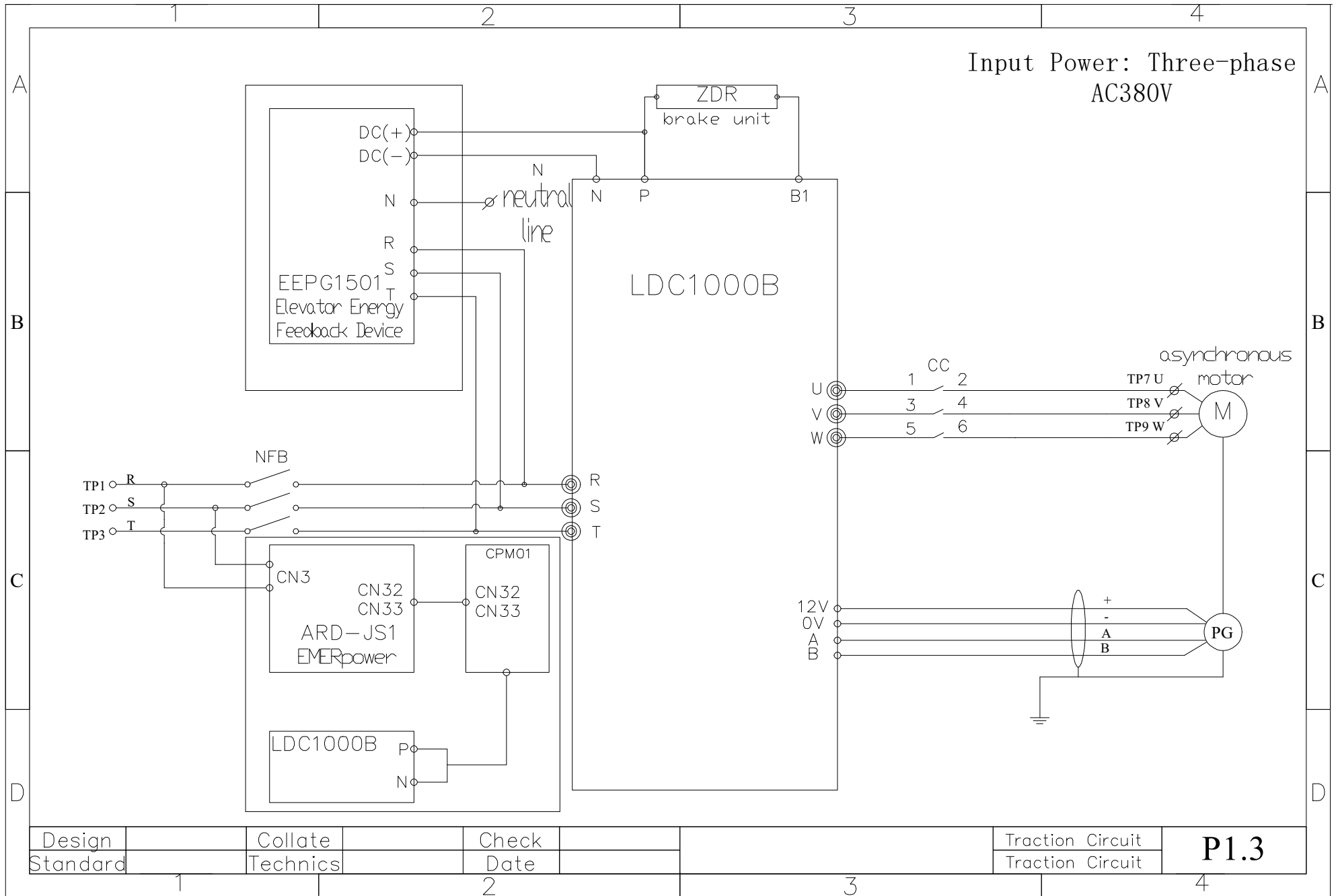


***DRAWING
OF
THE INTERFACE BOARD***





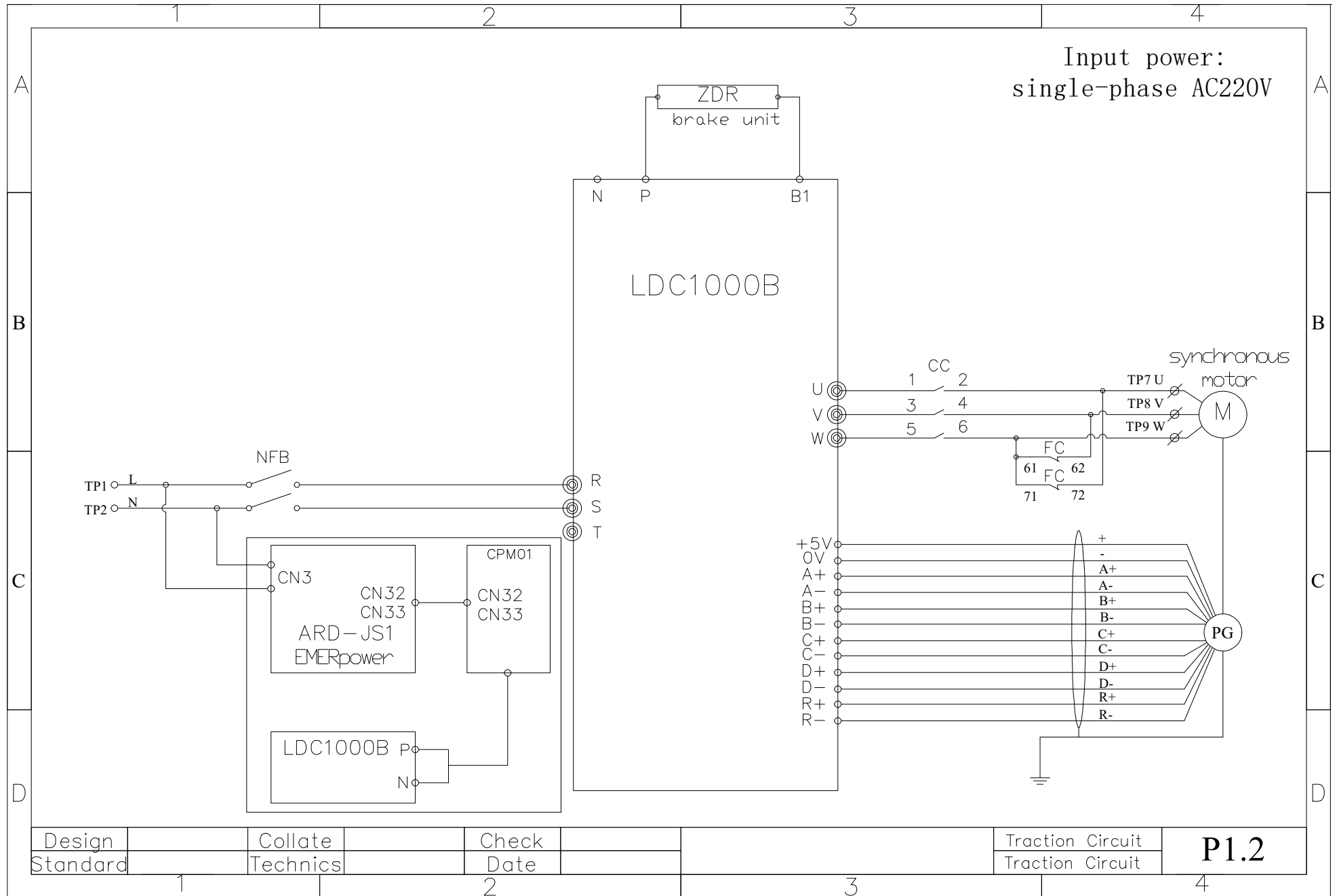
Design
Standard

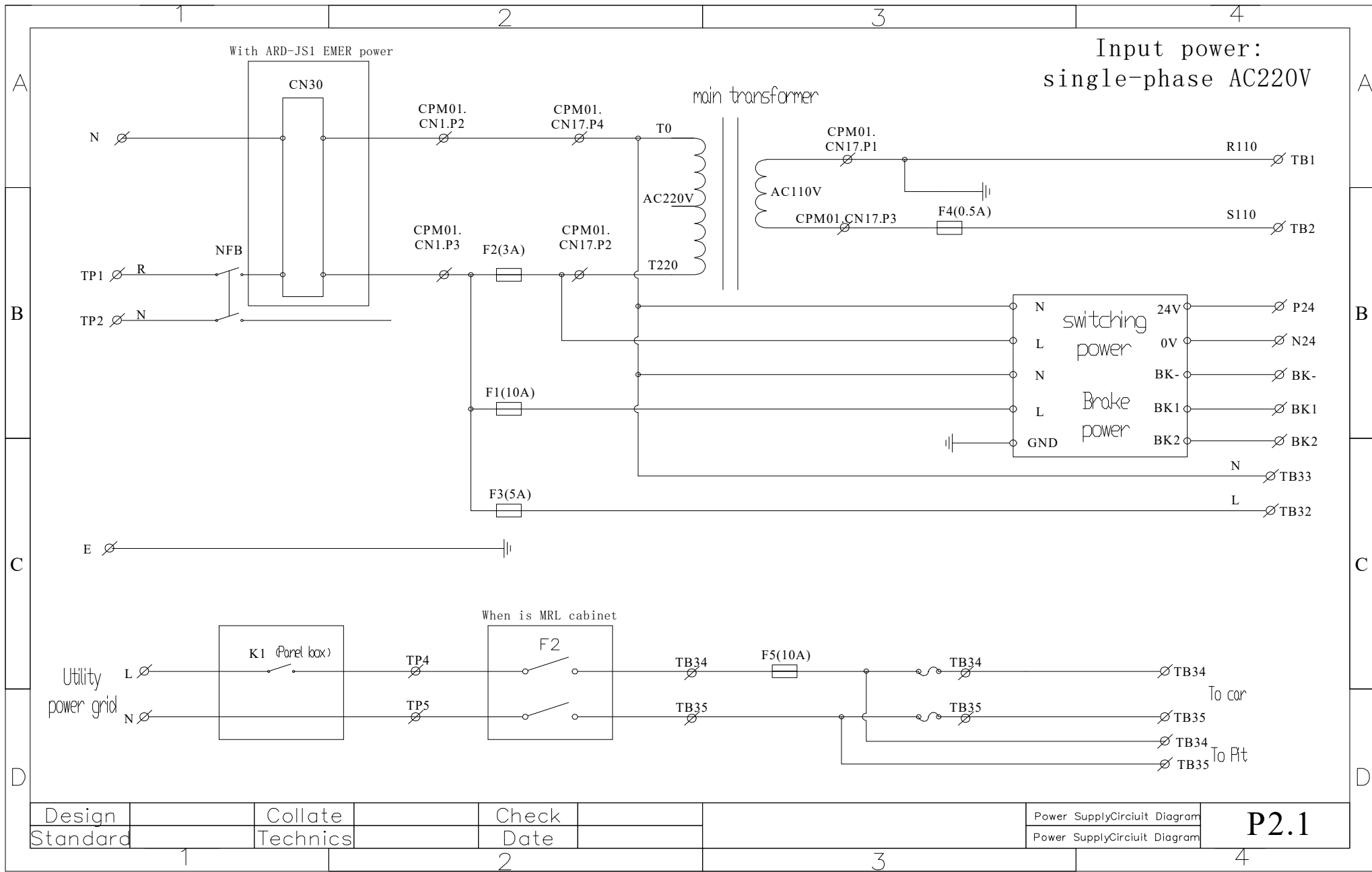
Collate
Technics

Check
Date

Traction Circuit
Traction Circuit

P1.3





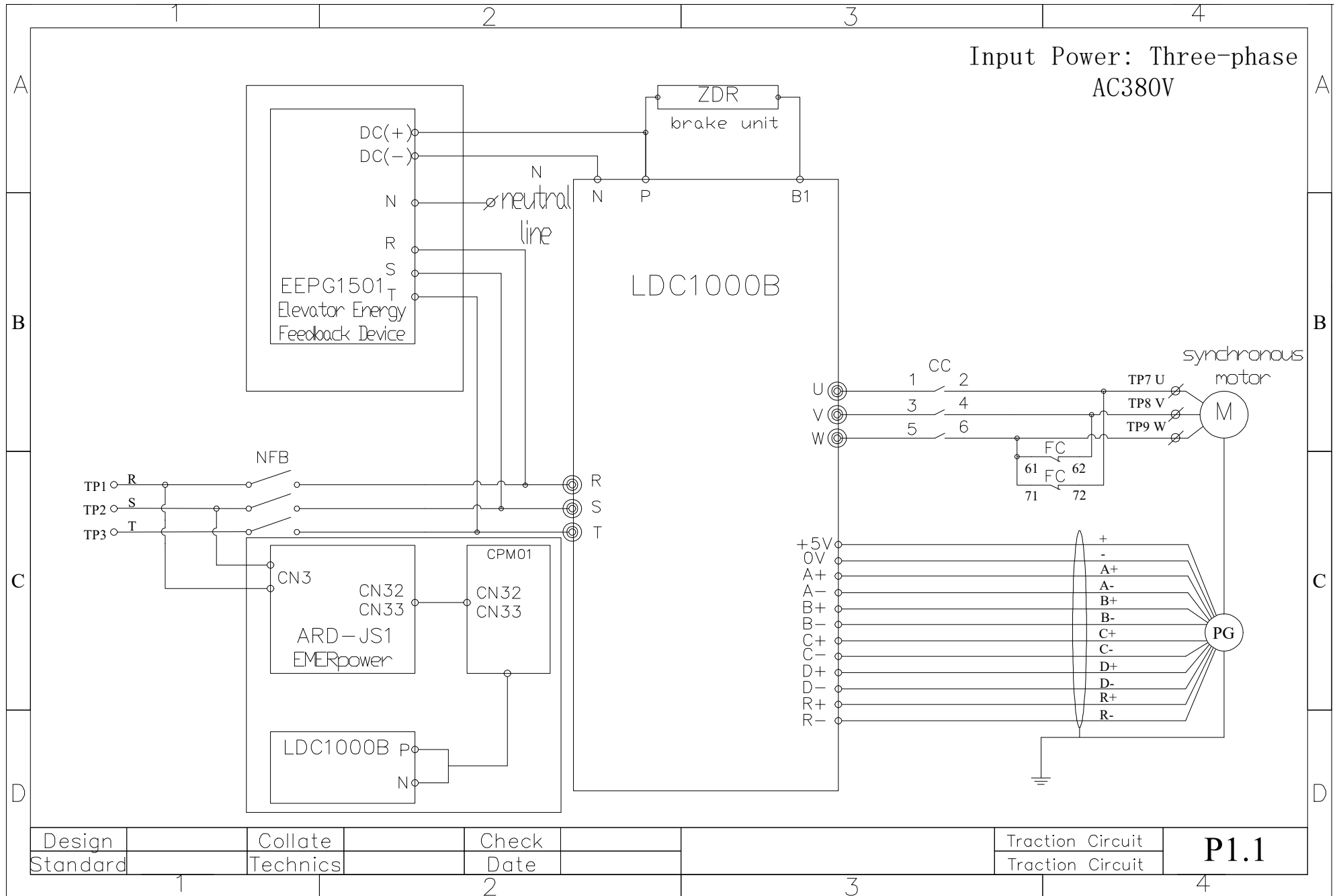
Design		Collate		Check		Power Supply Circuit Diagram	P2.1
Standard		Technics		Date		Power Supply Circuit Diagram	

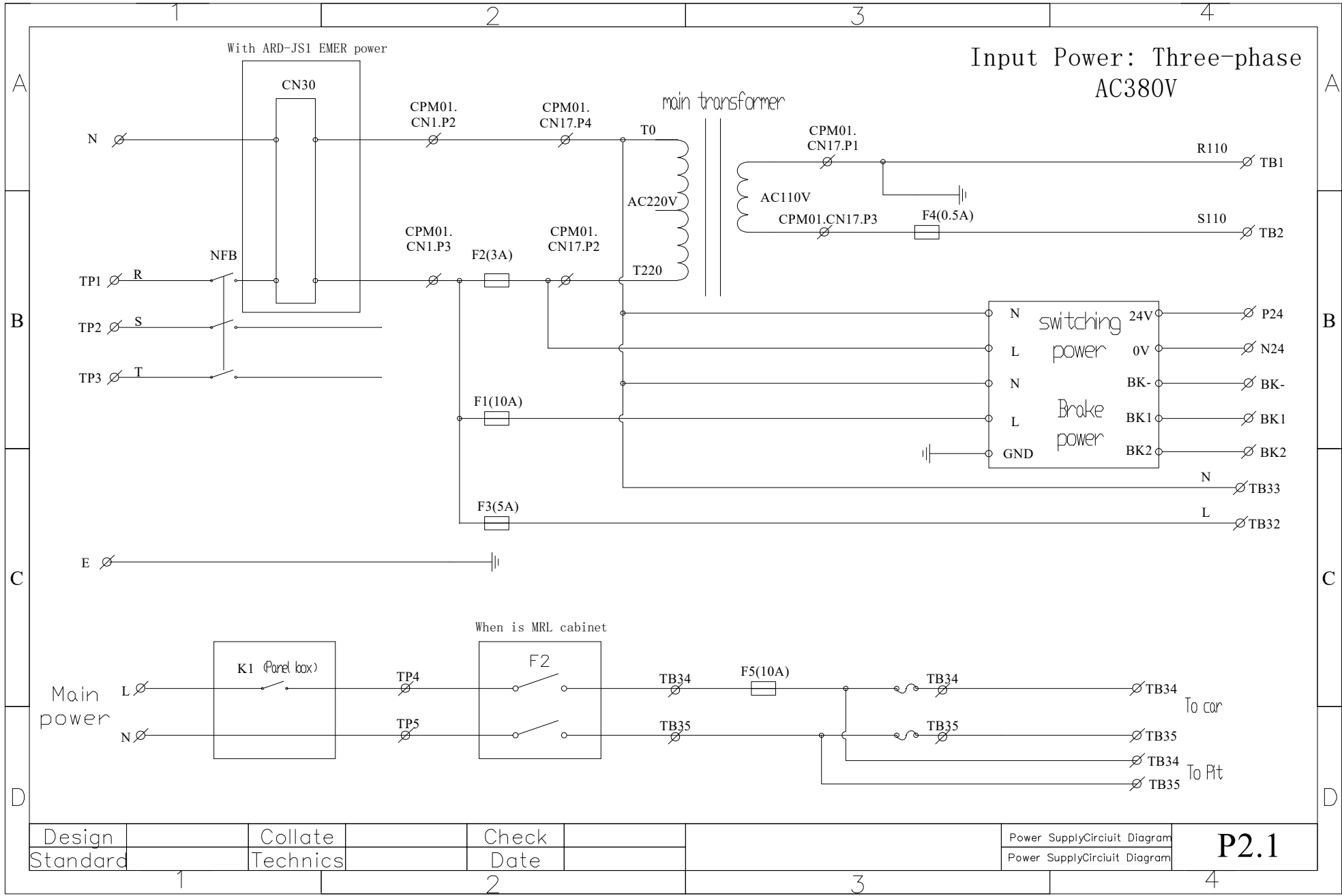
1

2

3

4

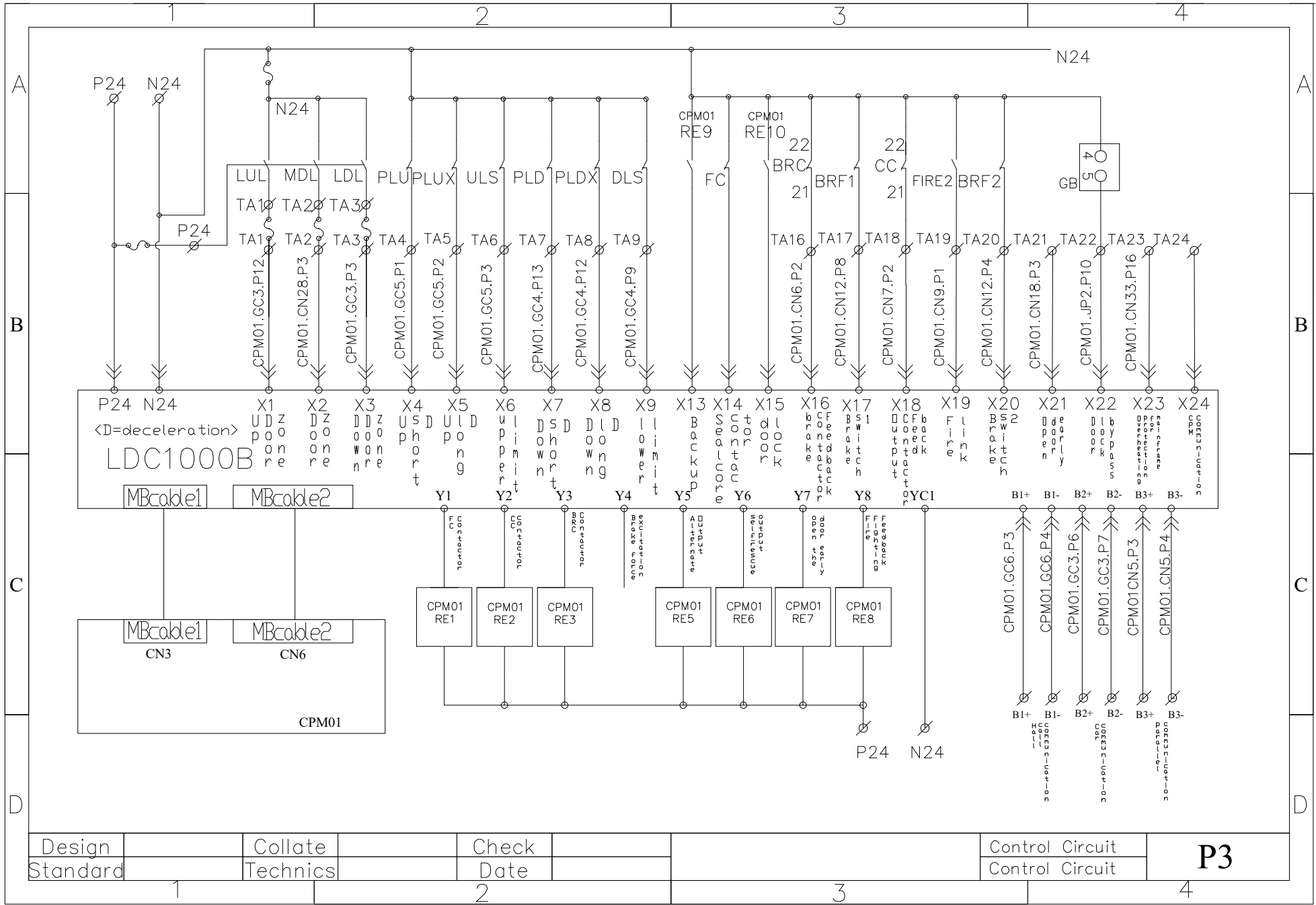


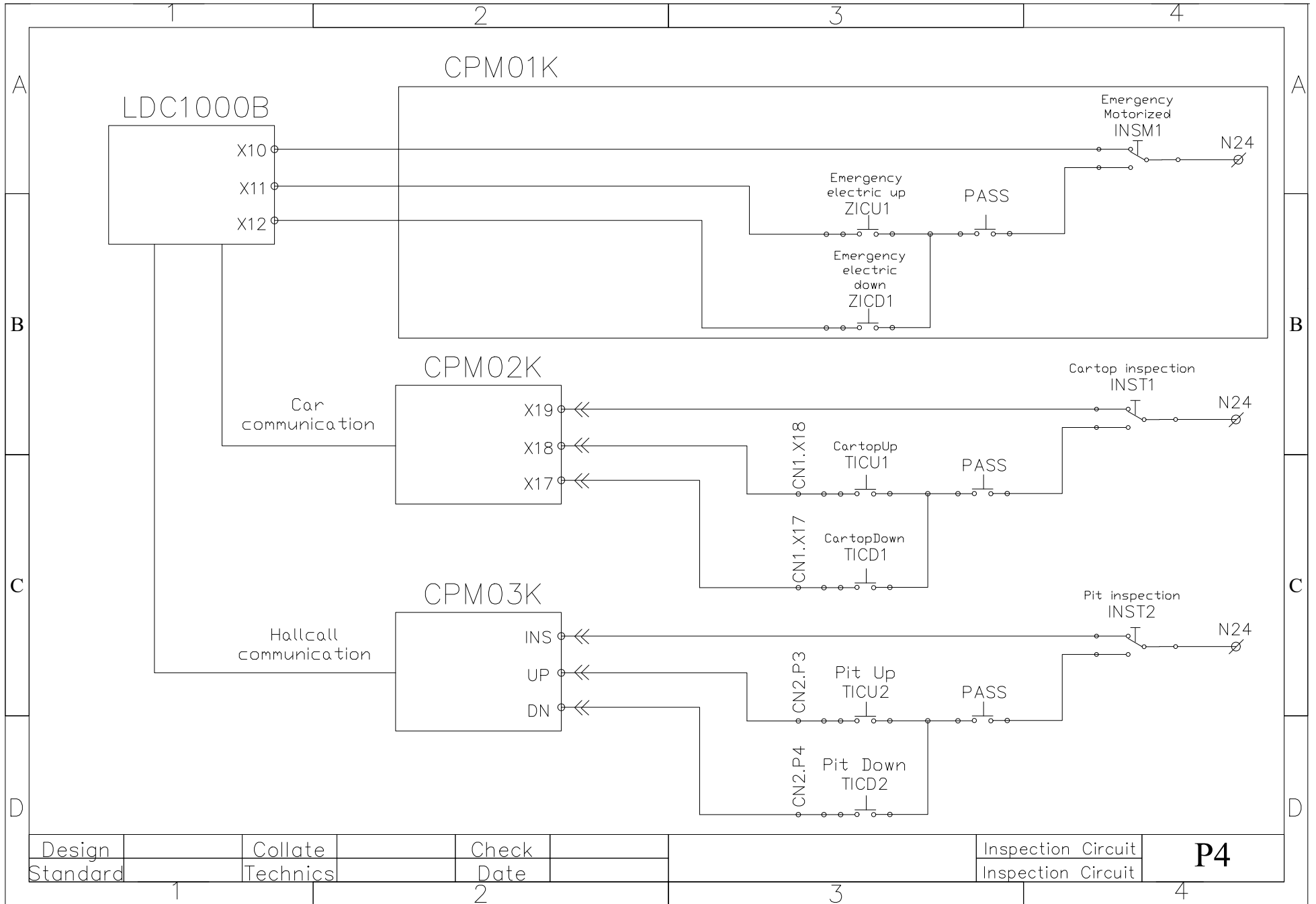


Design		Collate		Check	
Standard		Technics		Date	

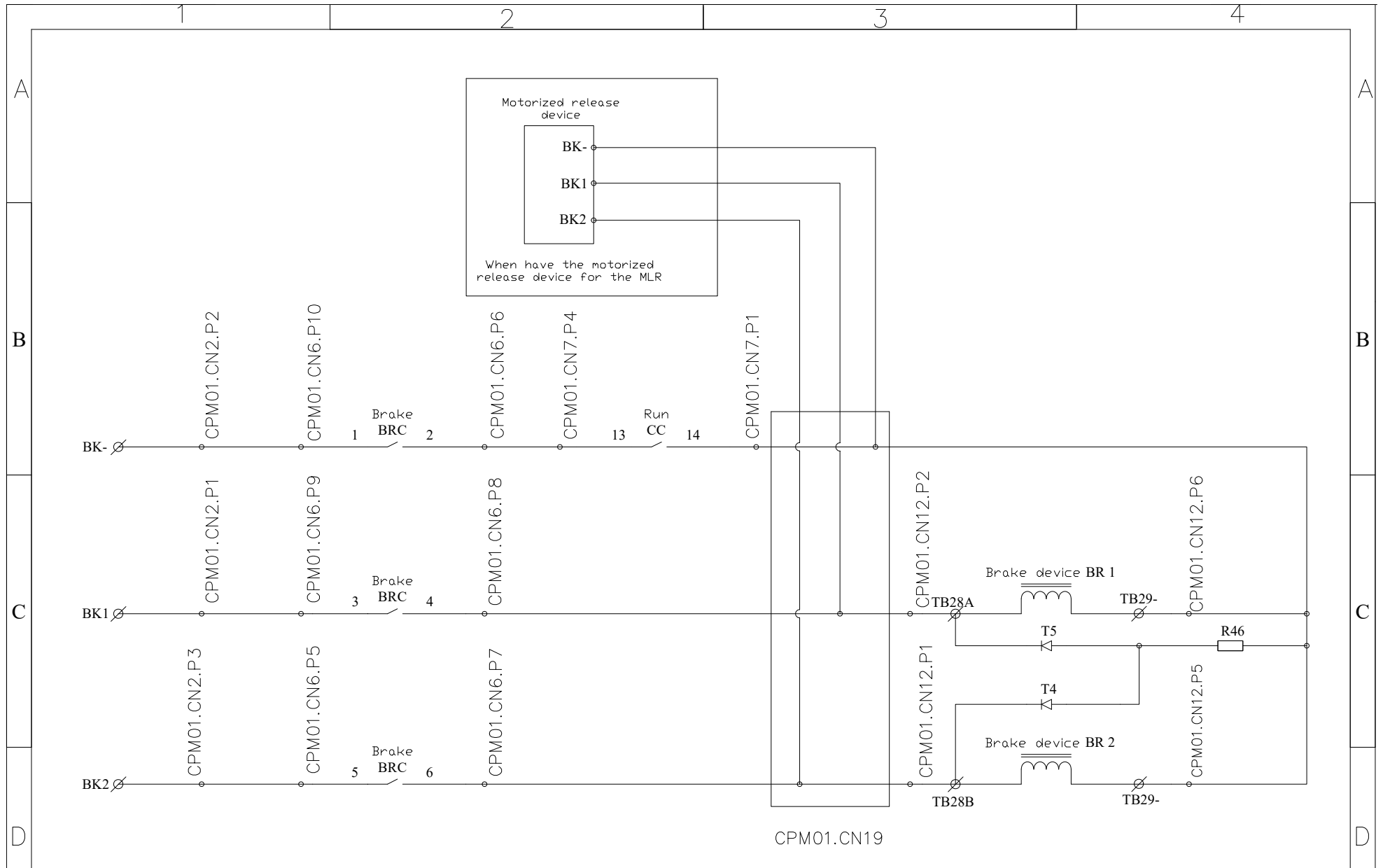
Power Supply Circuit Diagram
Power Supply Circuit Diagram

P2.1





Design	Collate	Check	Inspection Circuit	P4
Standard	Technics	Date	Inspection Circuit	
1	2	3	4	



CPM01.CN19

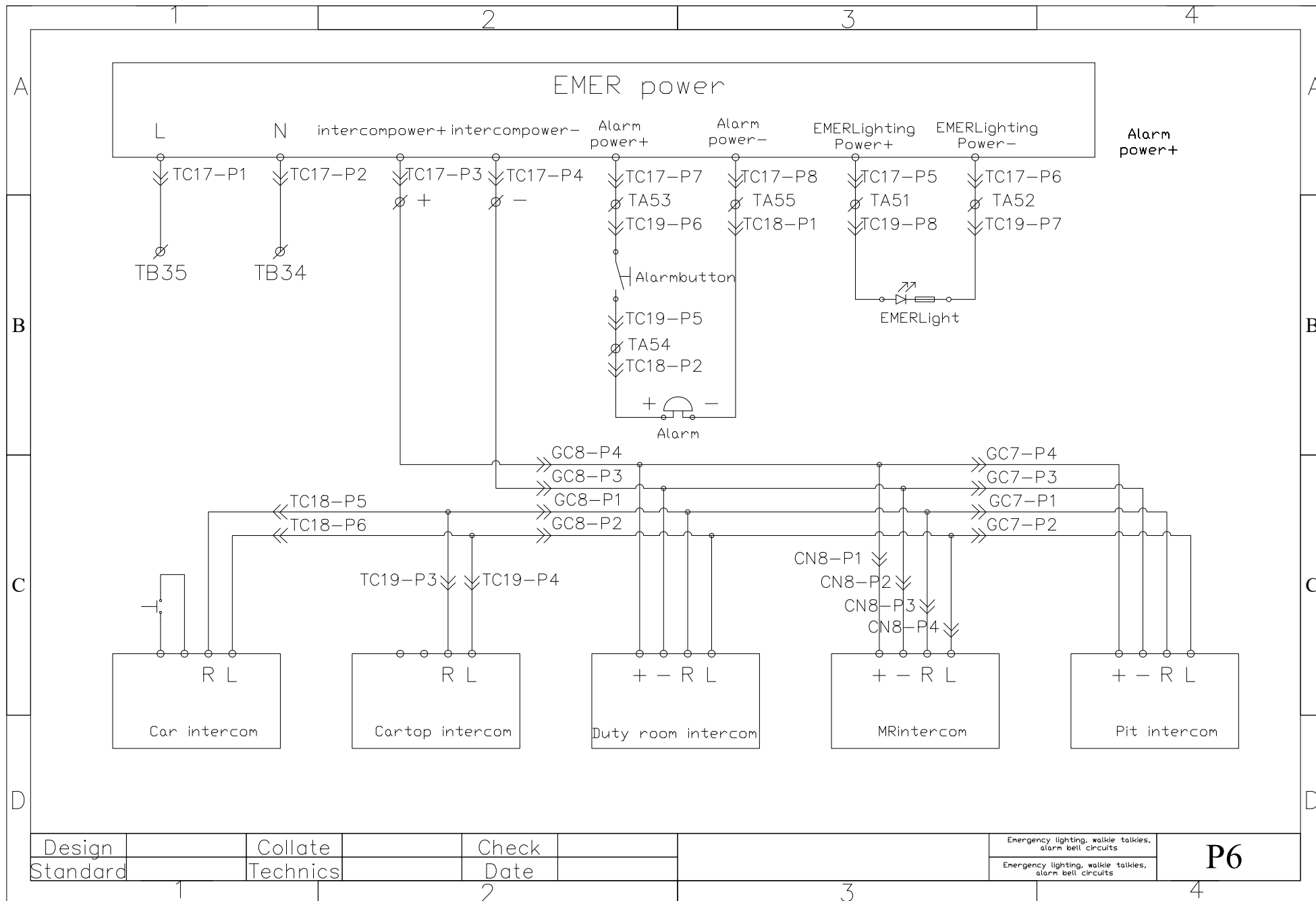
Design		Collate		Check		Brake Circuit	P5
Standard		Technics		Date		Brake Circuit	

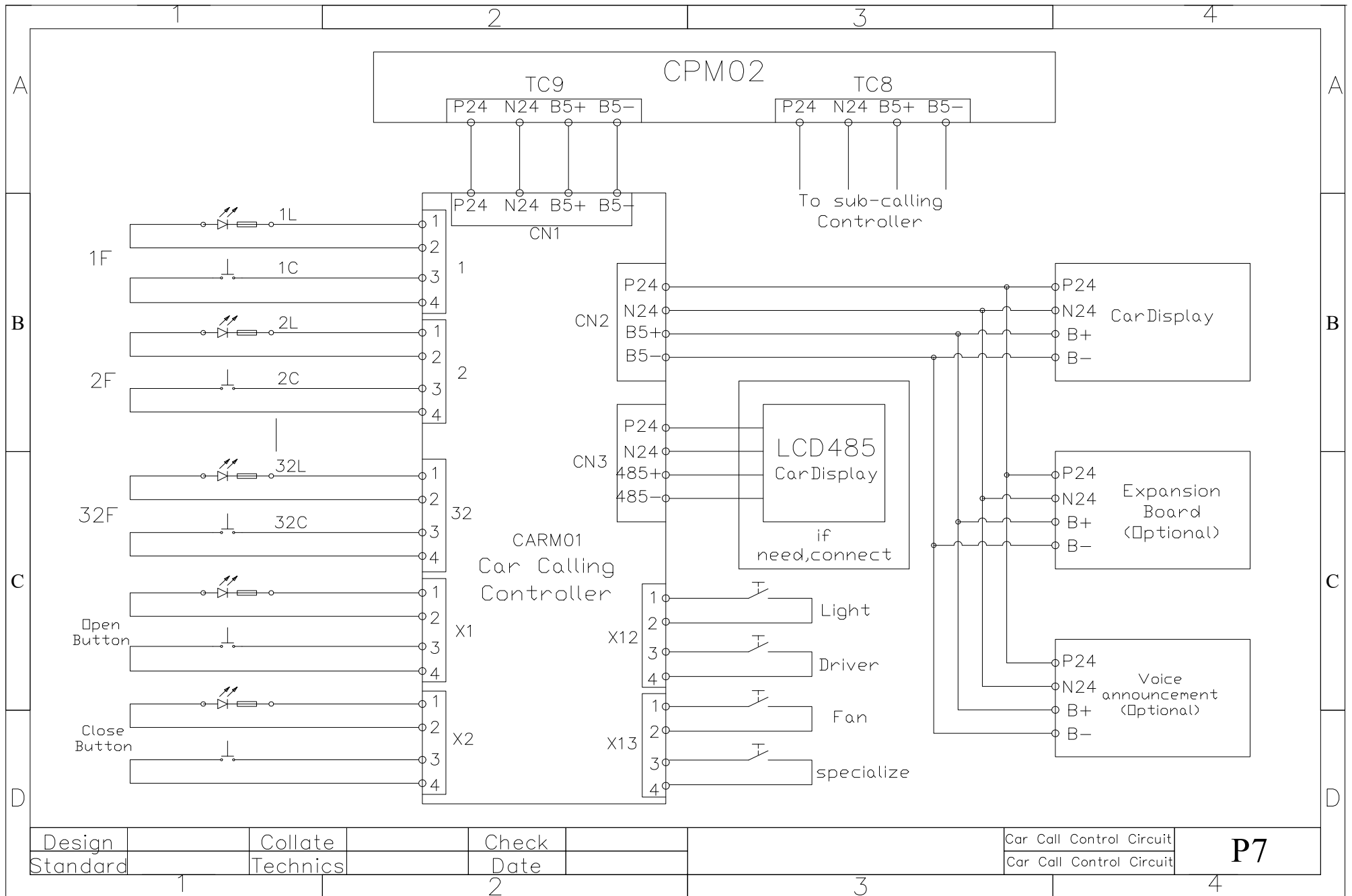
1

2

3

4

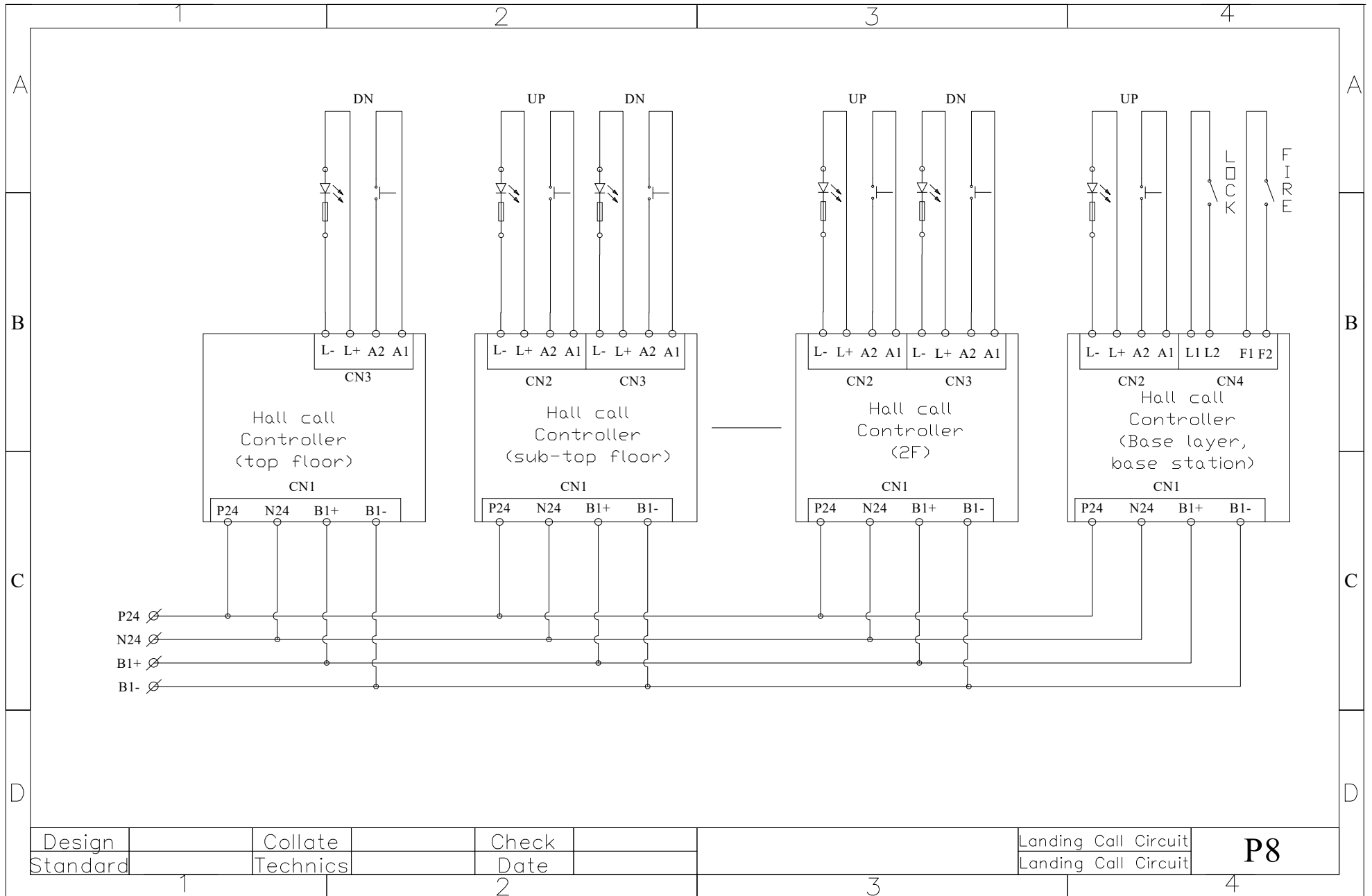




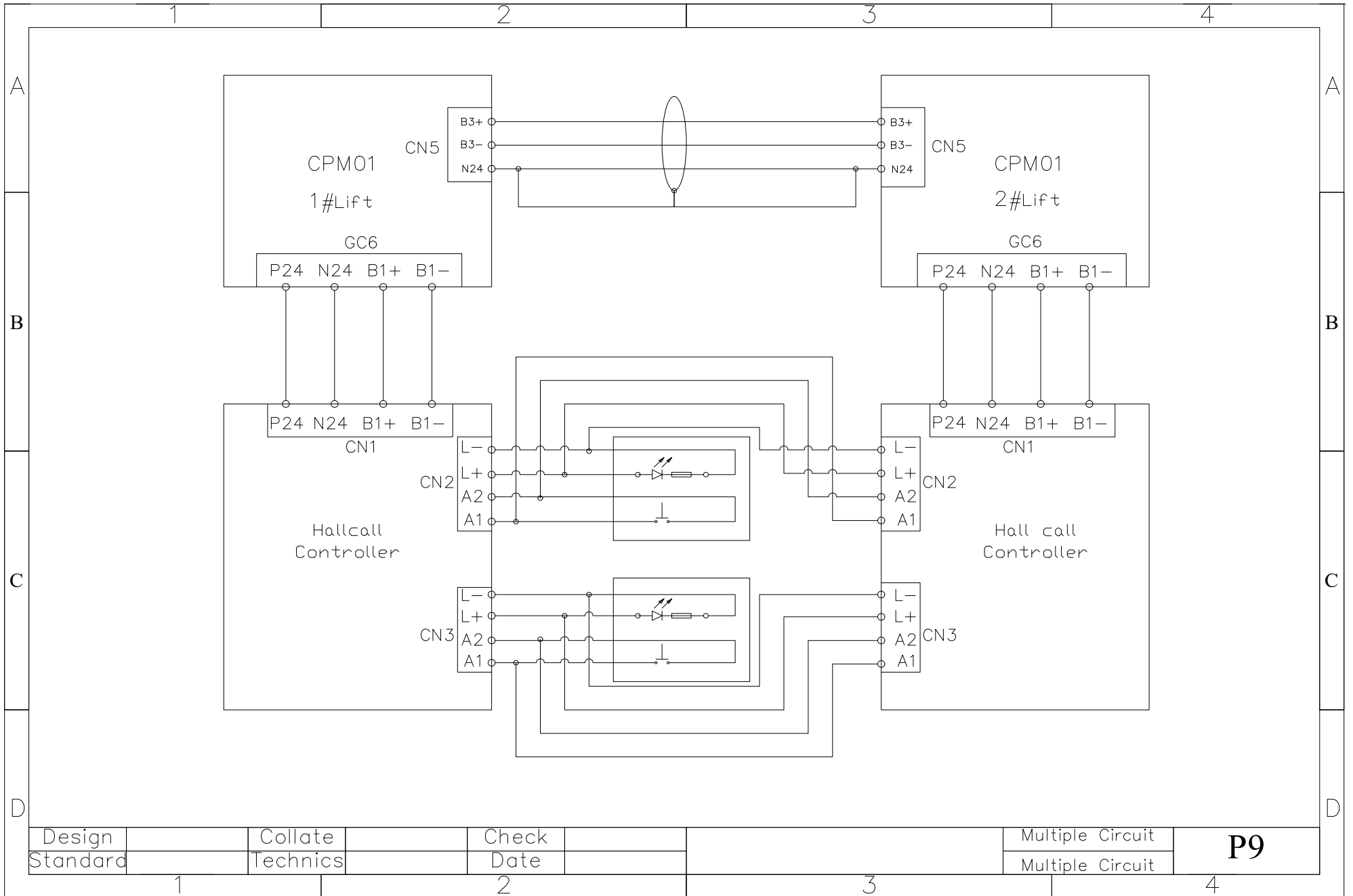
Design		Collate		Check	
Standard		Technics		Date	

Car Call Control Circuit
Car Call Control Circuit

P7



Design		Collate		Check		Landing Call Circuit	P8
Standard	1	Technics	2	Date	3	Landing Call Circuit	



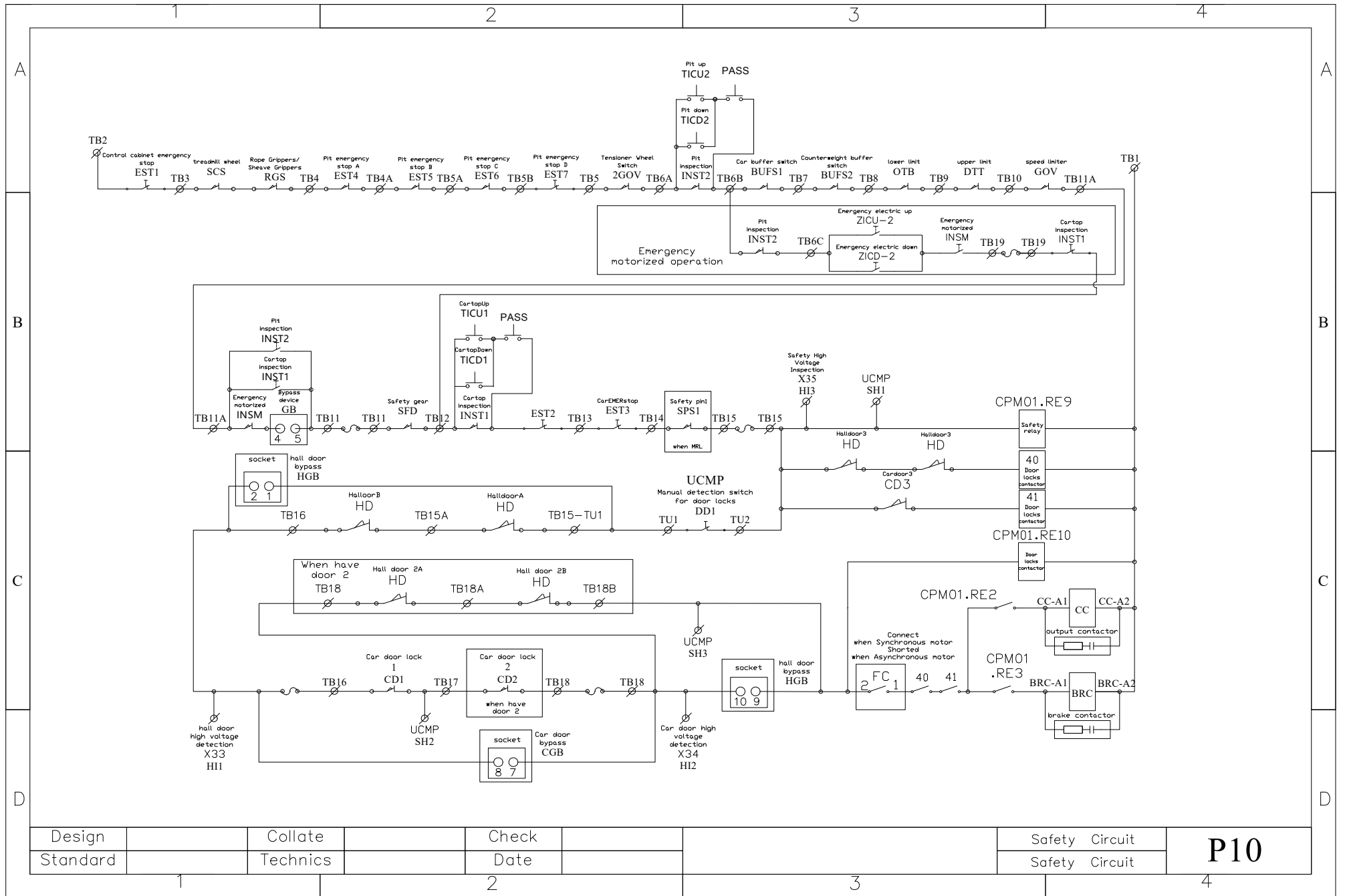
Design		Collate		Check		Multiple Circuit	P9
Standard		Technics		Date		Multiple Circuit	

1

2

3

4



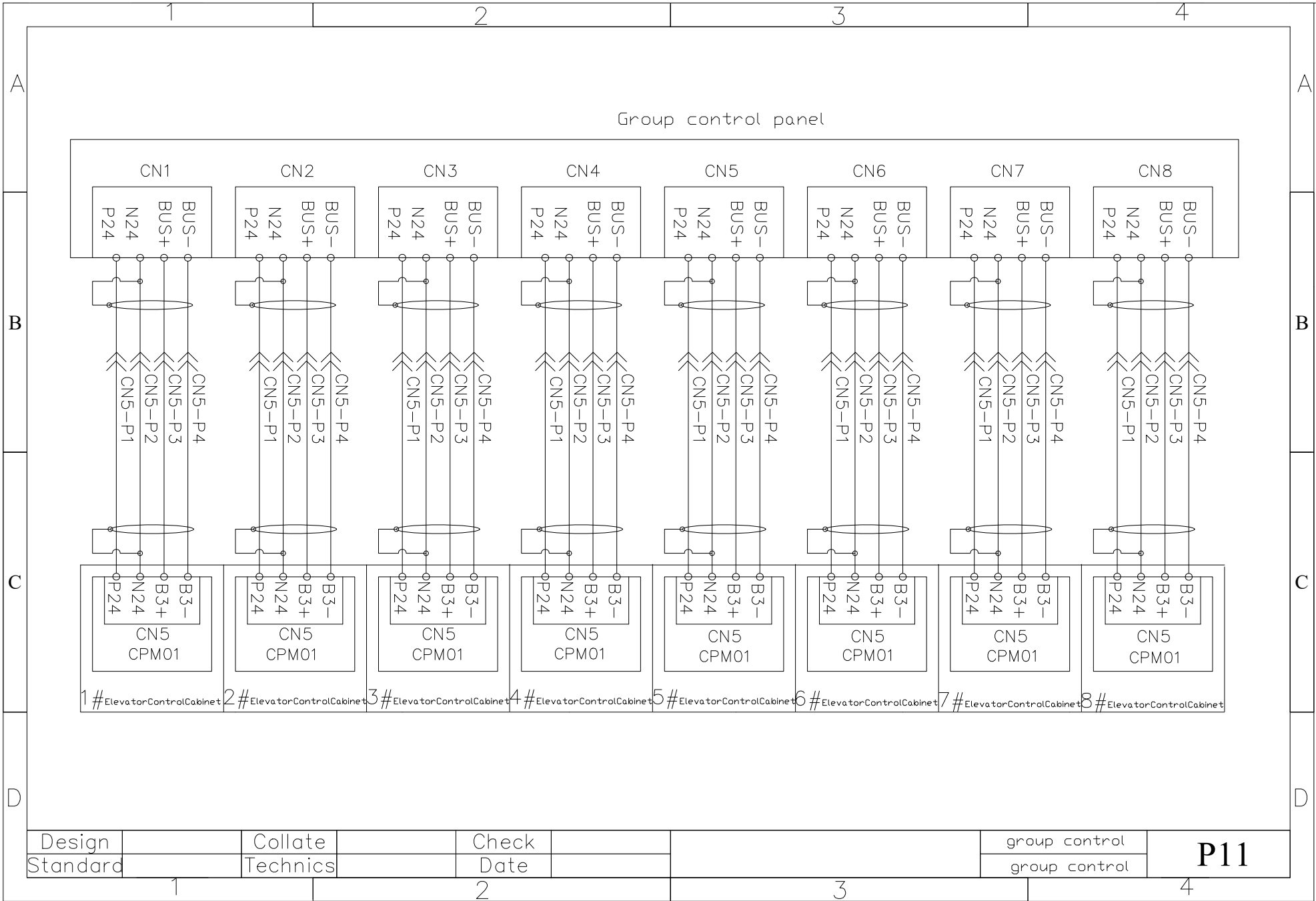
Design	Collate	Check	Safety Circuit	P10
Standard	Technics	Date	Safety Circuit	

1

2

3

4



Group control panel

CN1

CN2

CN3

CN4

CN5

CN6

CN7

CN8

BUS-
BUS+
N24
P24

BUS-
BUS+
N24
P24

BUS-
BUS+
N24
P24

BUS-
BUS+
N24
P24

BUS-
BUS+
N24
P24

BUS-
BUS+
N24
P24

BUS-
BUS+
N24
P24

BUS-
BUS+
N24
P24

CN5-P4
CN5-P3
CN5-P2
CN5-P1

CN5-P4
CN5-P3
CN5-P2
CN5-P1

CN5-P4
CN5-P3
CN5-P2
CN5-P1

CN5-P4
CN5-P3
CN5-P2
CN5-P1

CN5-P4
CN5-P3
CN5-P2
CN5-P1

CN5-P4
CN5-P3
CN5-P2
CN5-P1

CN5-P4
CN5-P3
CN5-P2
CN5-P1

CN5-P4
CN5-P3
CN5-P2
CN5-P1

B3-
B3+
N24
P24

B3-
B3+
N24
P24

B3-
B3+
N24
P24

B3-
B3+
N24
P24

B3-
B3+
N24
P24

B3-
B3+
N24
P24

B3-
B3+
N24
P24

B3-
B3+
N24
P24

CN5
CPM01

CN5
CPM01

CN5
CPM01

CN5
CPM01

CN5
CPM01

CN5
CPM01

CN5
CPM01

CN5
CPM01

1 #ElevatorControlCabinet

2 #ElevatorControlCabinet

3 #ElevatorControlCabinet

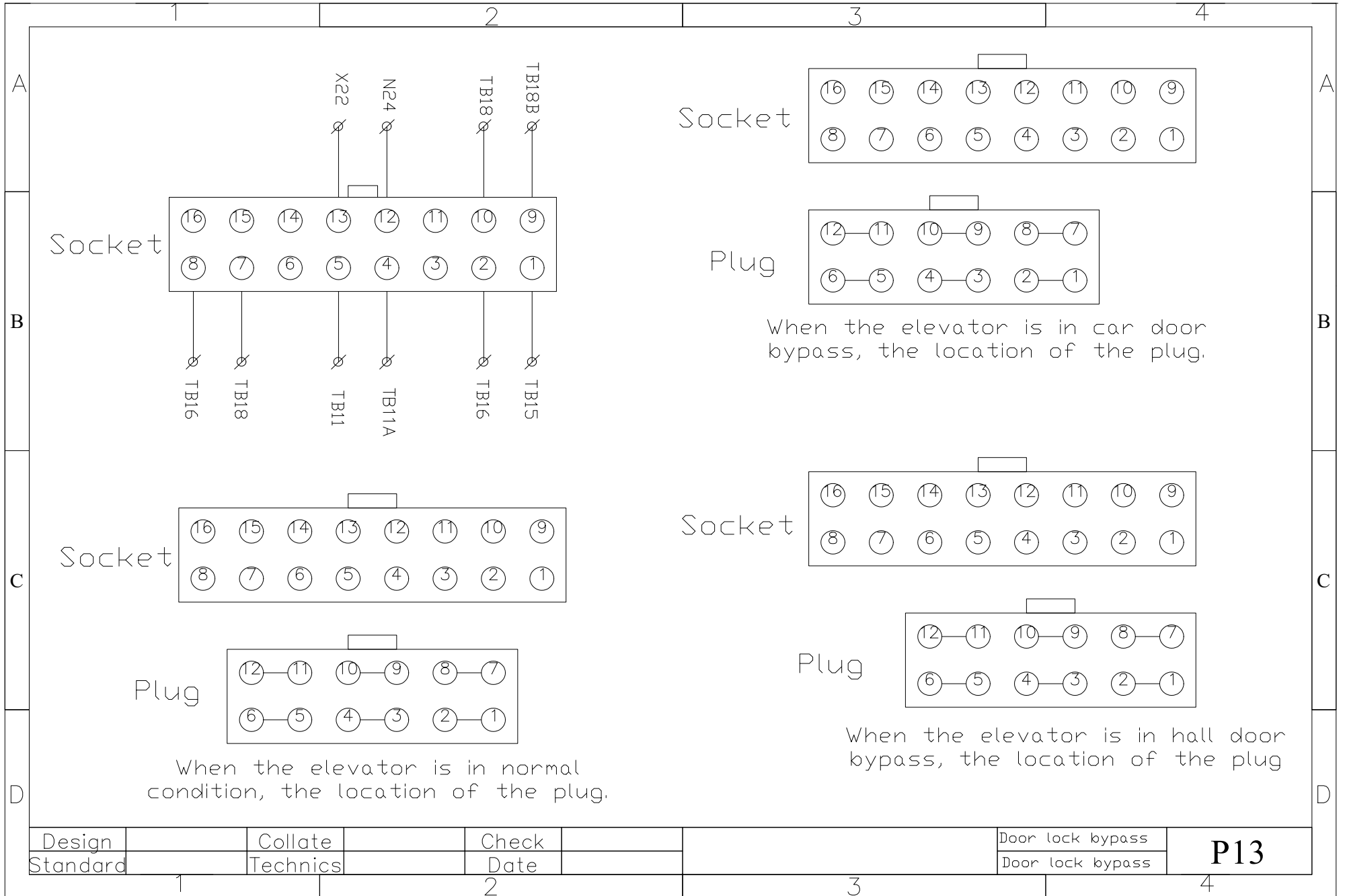
4 #ElevatorControlCabinet

5 #ElevatorControlCabinet

6 #ElevatorControlCabinet

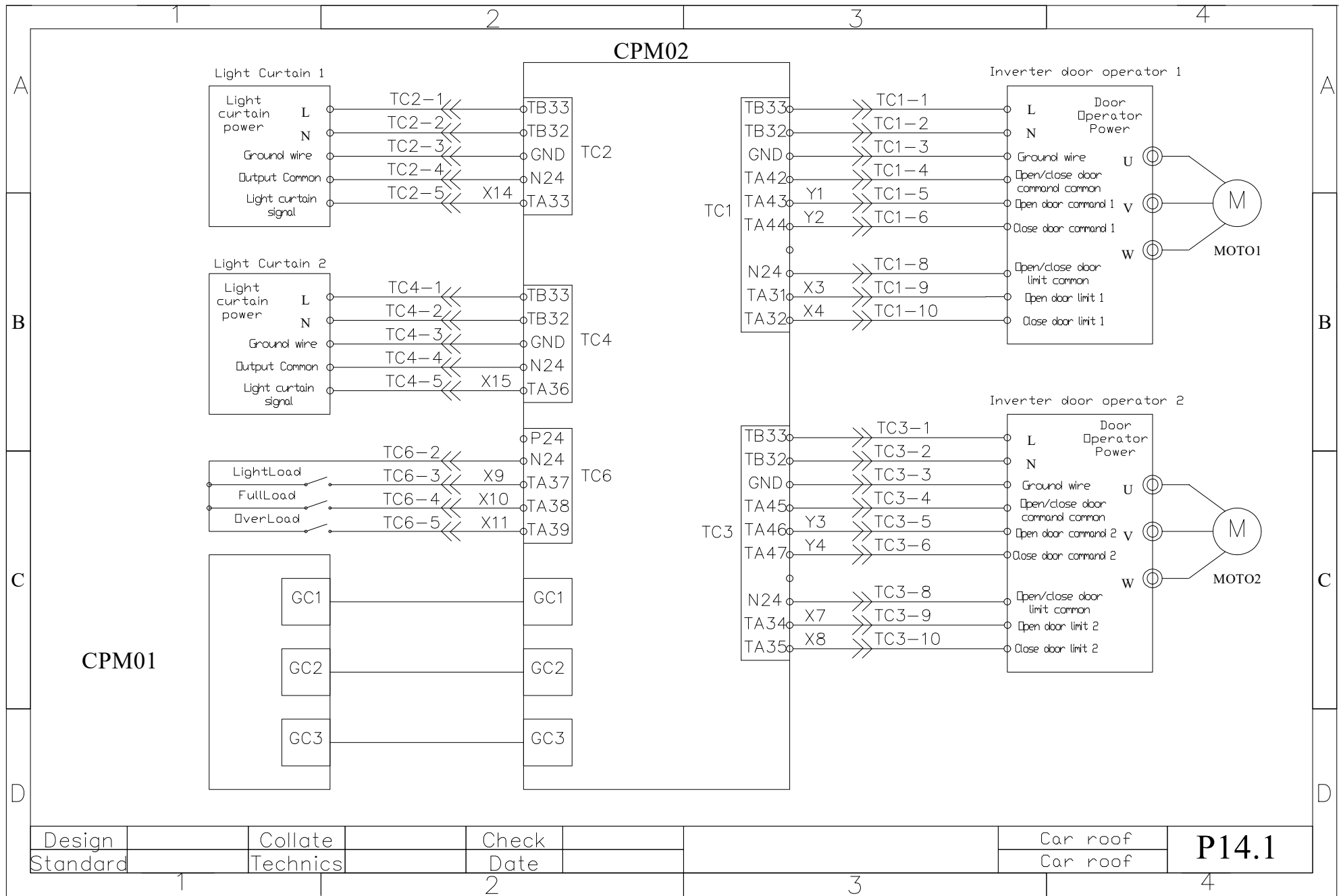
7 #ElevatorControlCabinet

8 #ElevatorControlCabinet



Design		Collate		Check	
Standard		Technics		Date	

Door lock bypass
Door lock bypass



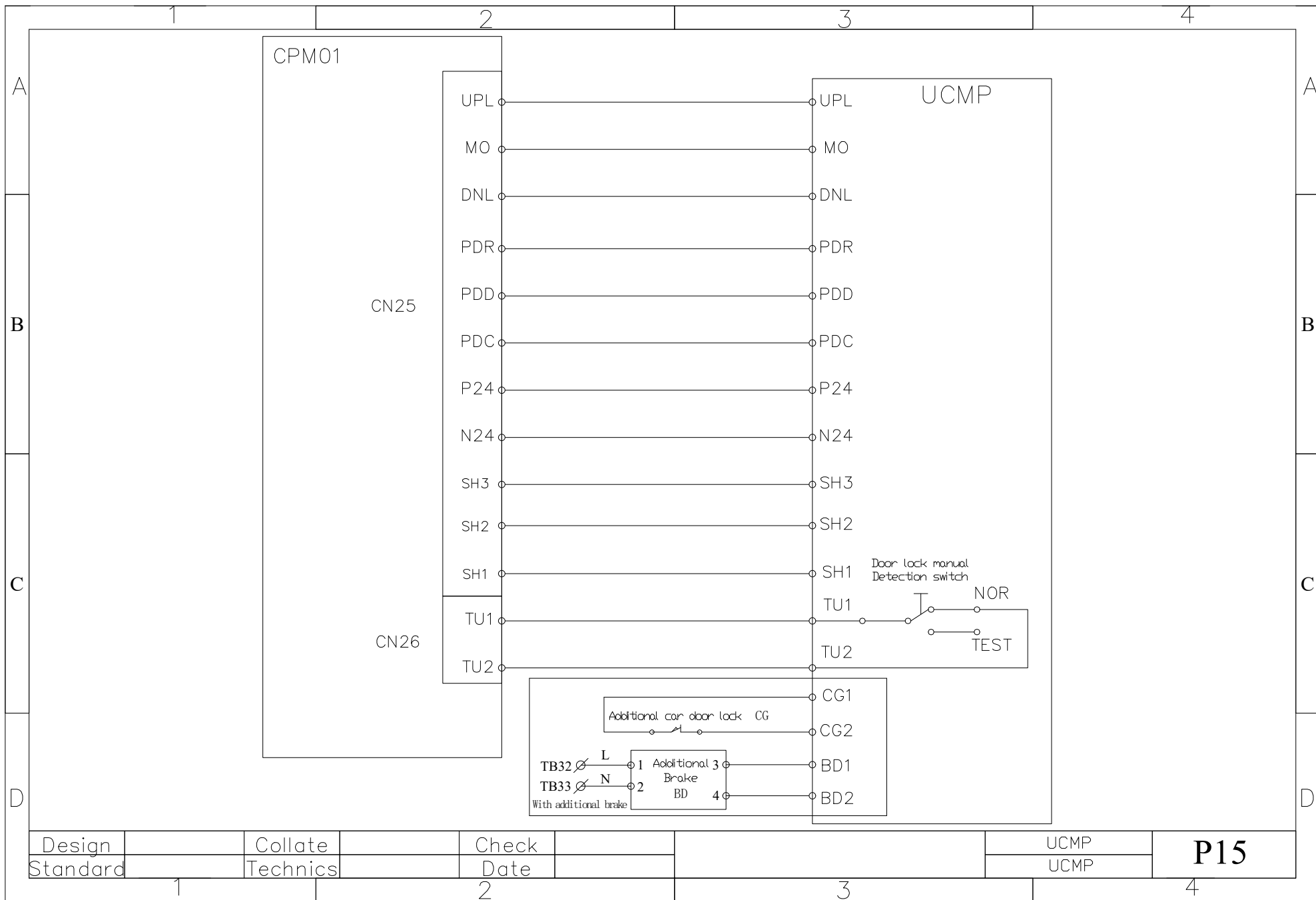
Design	Collate	Check	Car roof	P14.1
Standard	Technics	Date	Car roof	

1

2

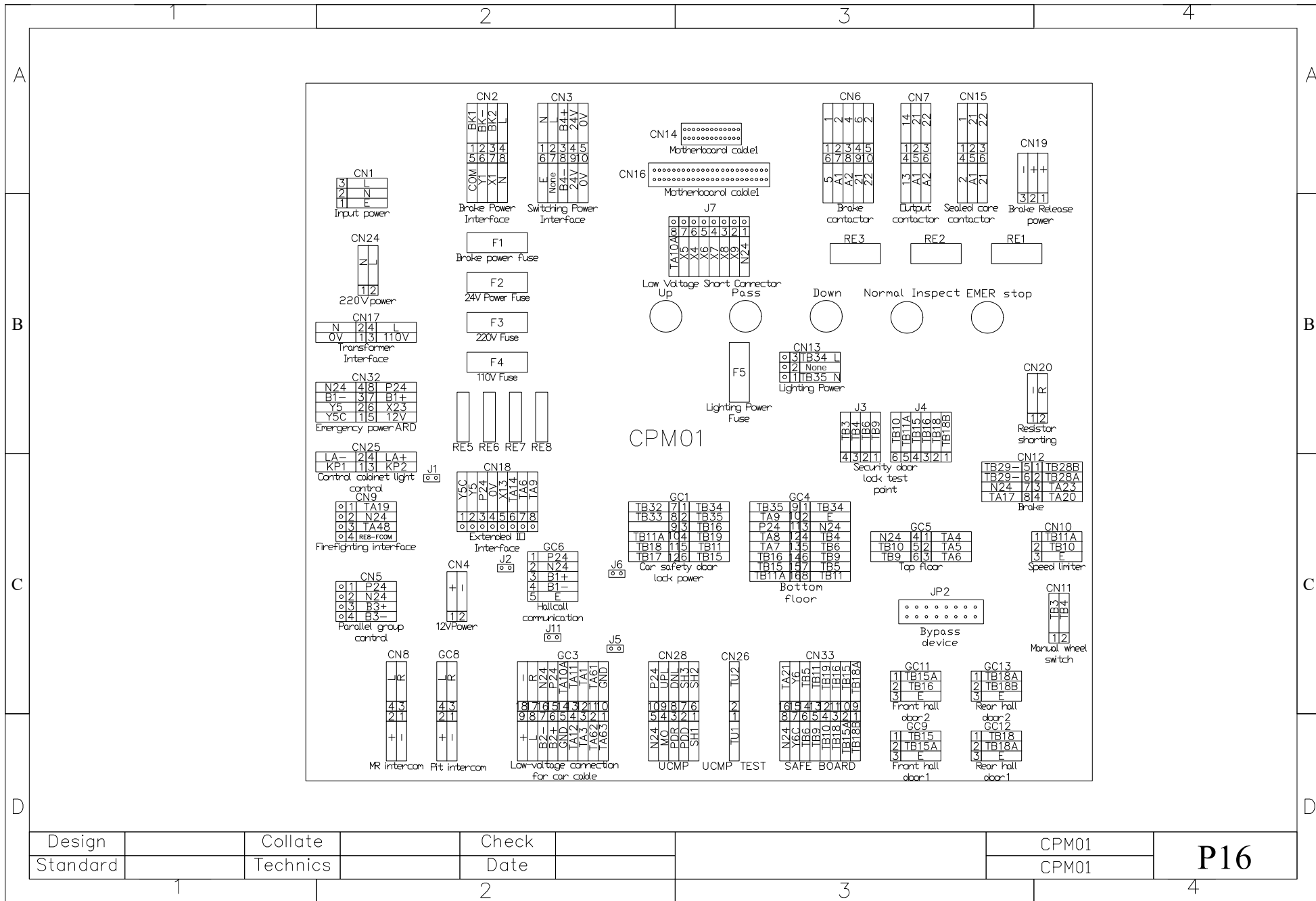
3

4



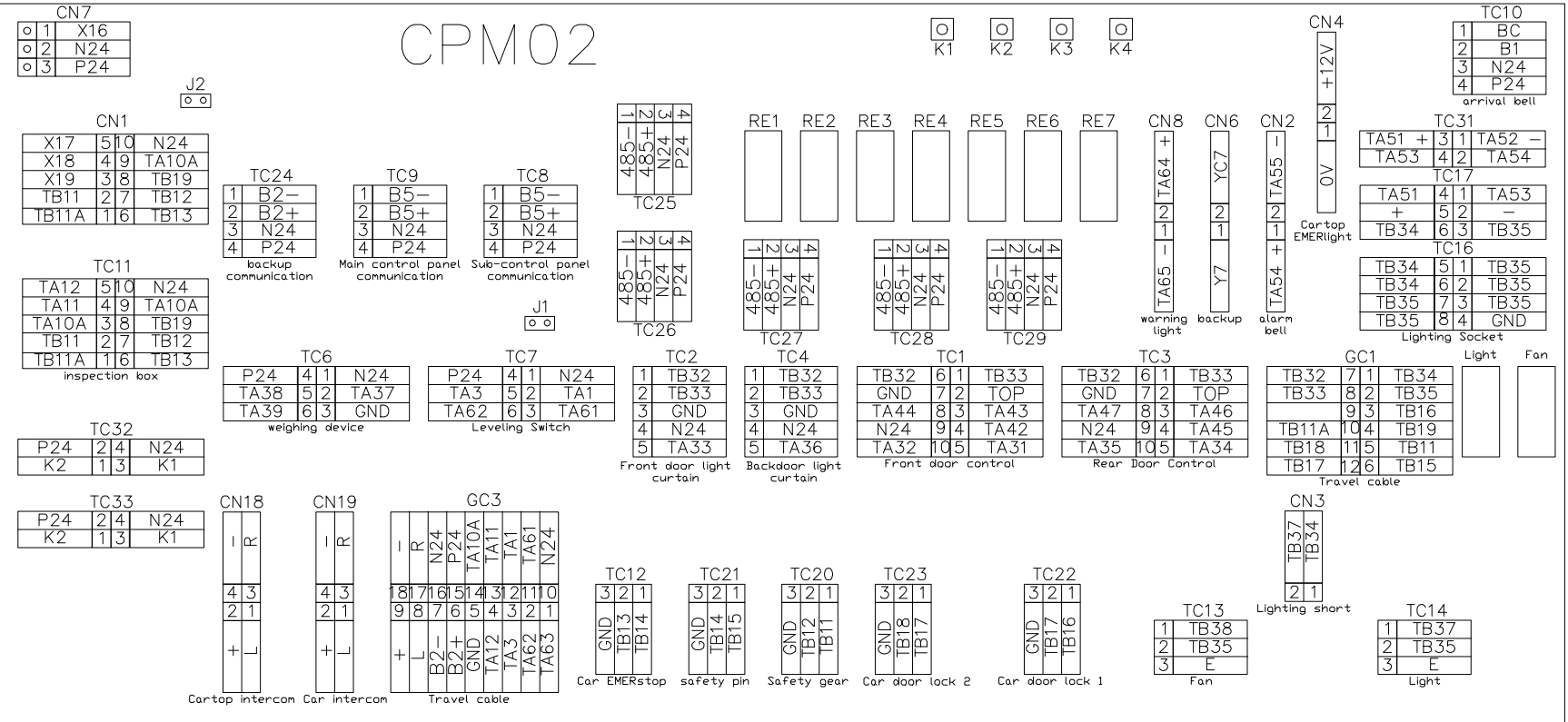
Design	Collate	Check	UCMP	P15
Standard	Technics	Date	UCMP	

1 2 3 4



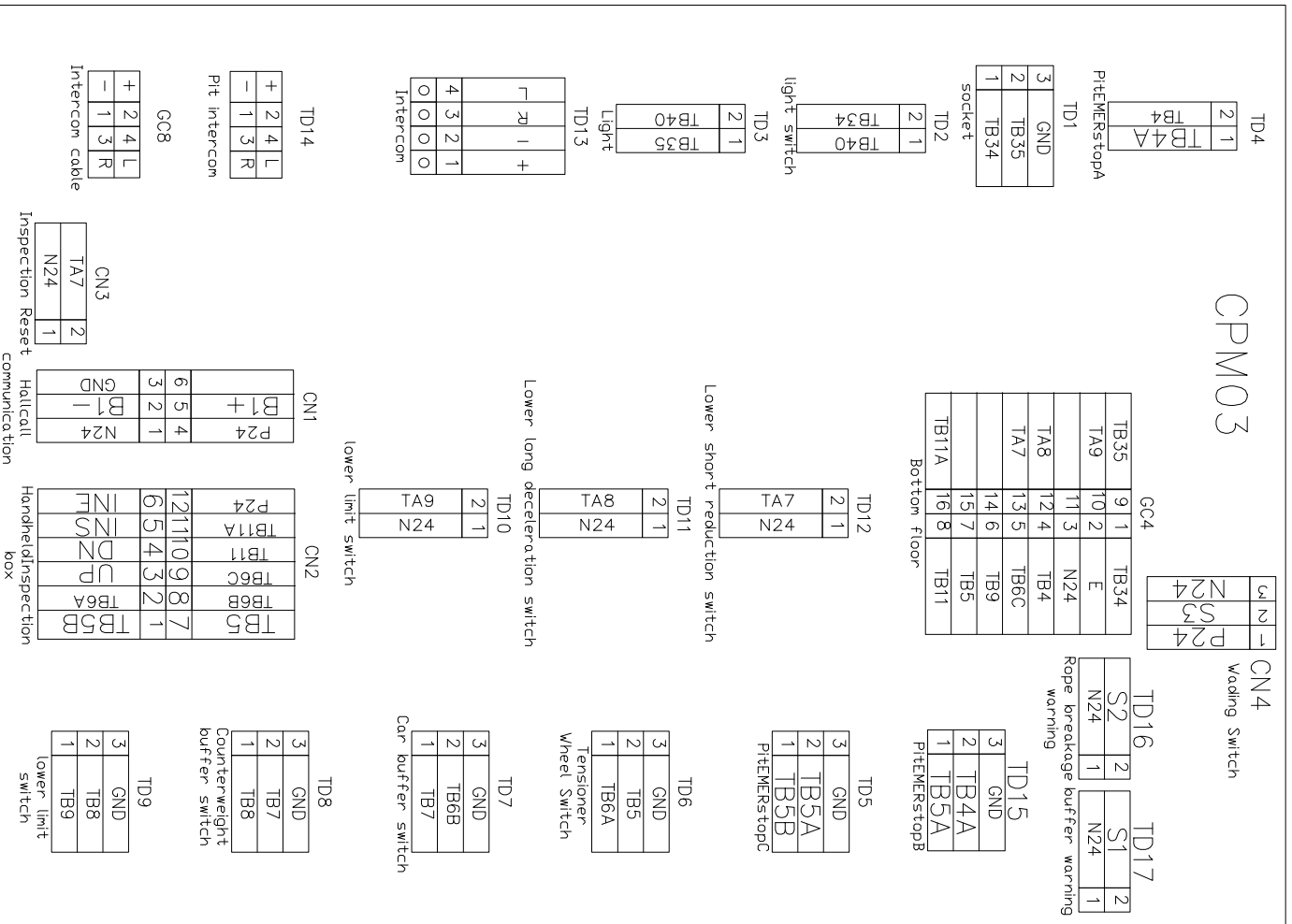
Design	Collate	Check	CPM01	P16
Standard	Technics	Date	CPM01	

CPM02

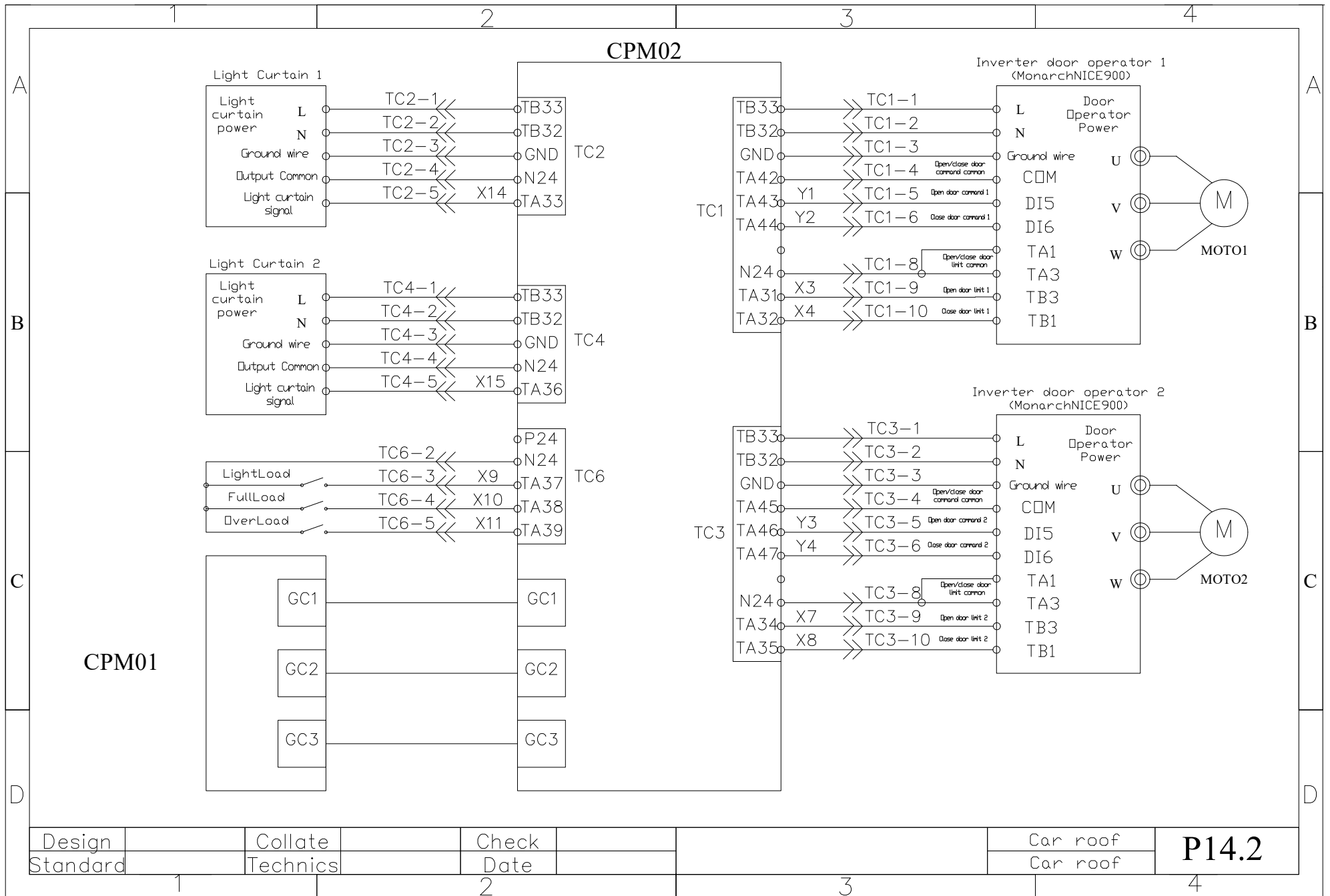


Design	Collate	Check	CPM02	P17
Standard	Technics	Date	CPM02	

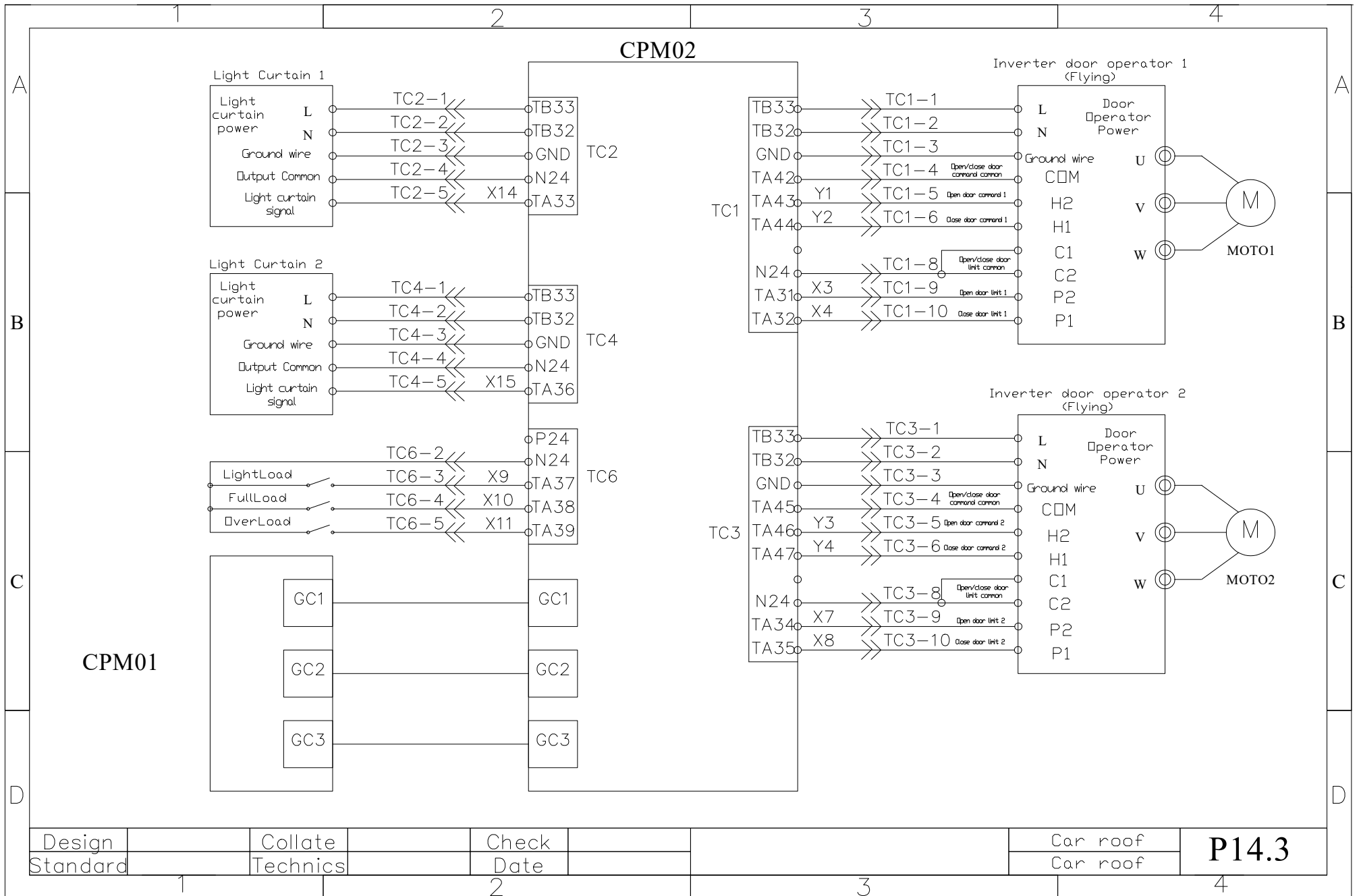
CPM03



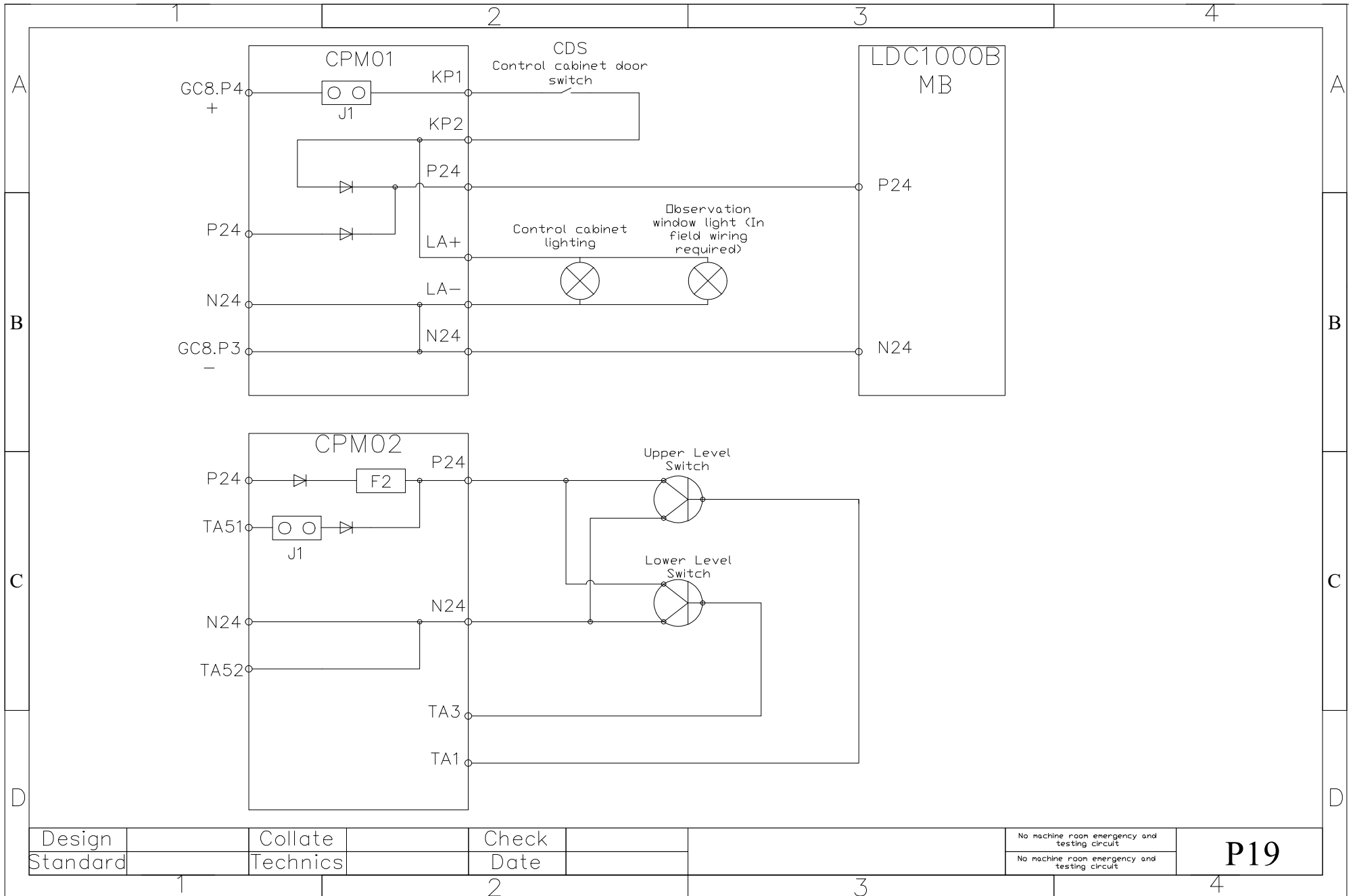
Design	Collate	Check	CPM03	P18
Standard	Technics	Date	CPM03	



Design	Collate	Check	Car roof	P14.2
Standard	Technics	Date	Car roof	



Design	Collate	Check	Car roof	P14.3
Standard	Technics	Date	Car roof	



Design
Standard

Collate
Technics

Check
Date

No machine room emergency and testing circuit

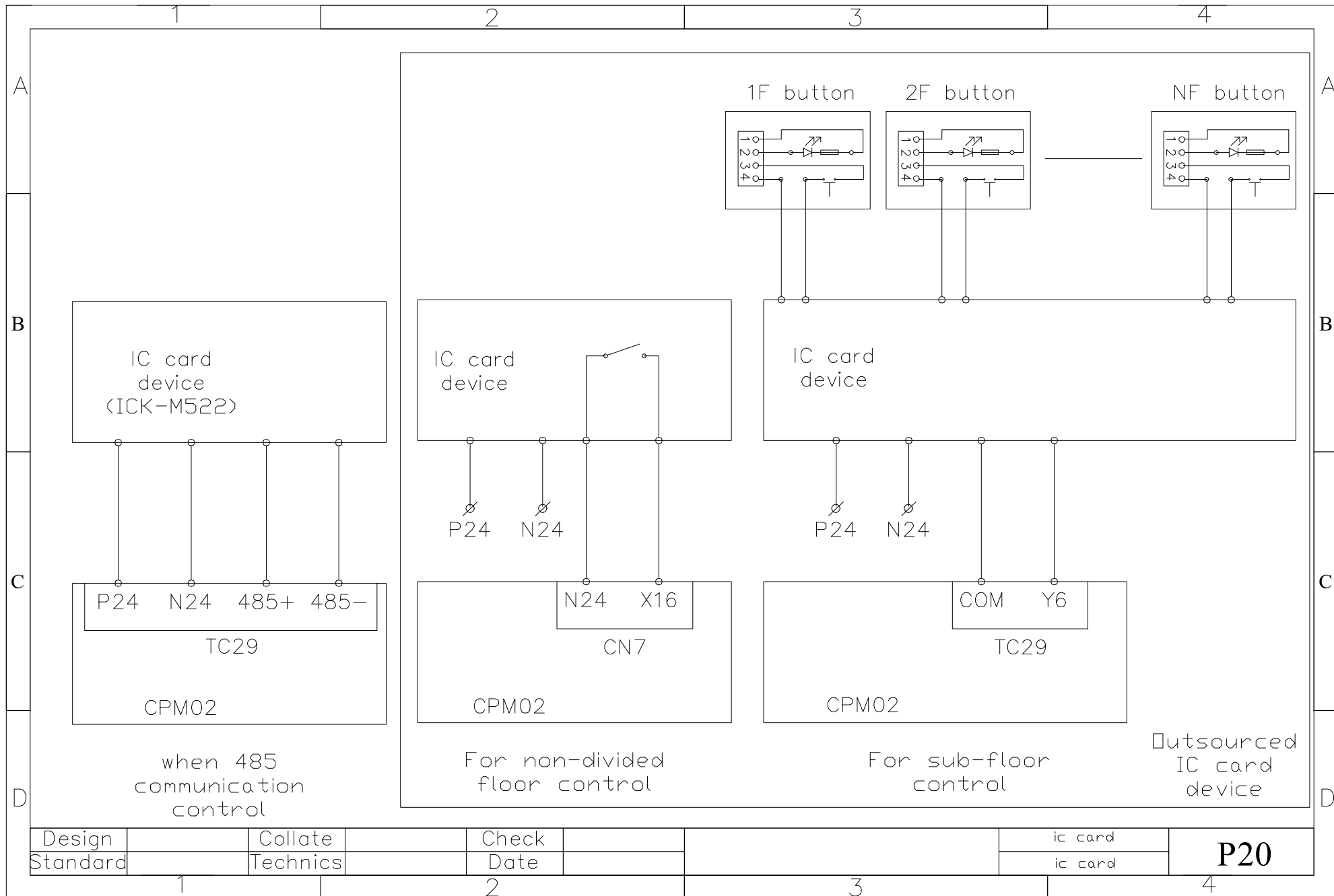
P19

1

2

3

4



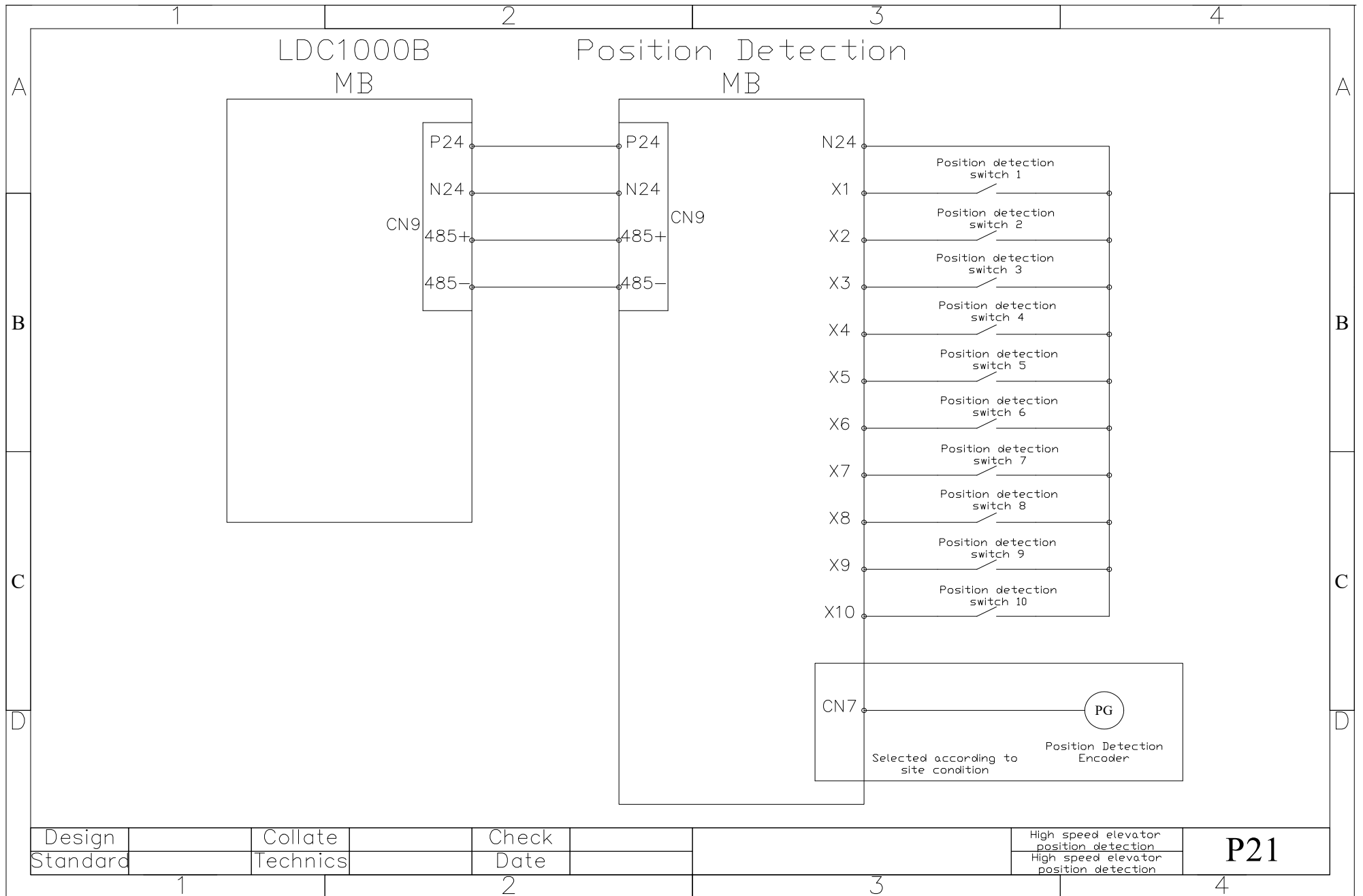
Design		Collate		Check		ic card	P20
Standard	1	Technics		Date		ic card	

1

2

3

4



Design
Standard

Collate
Technics

Check
Date

High speed elevator
position detection
High speed elevator
position detection

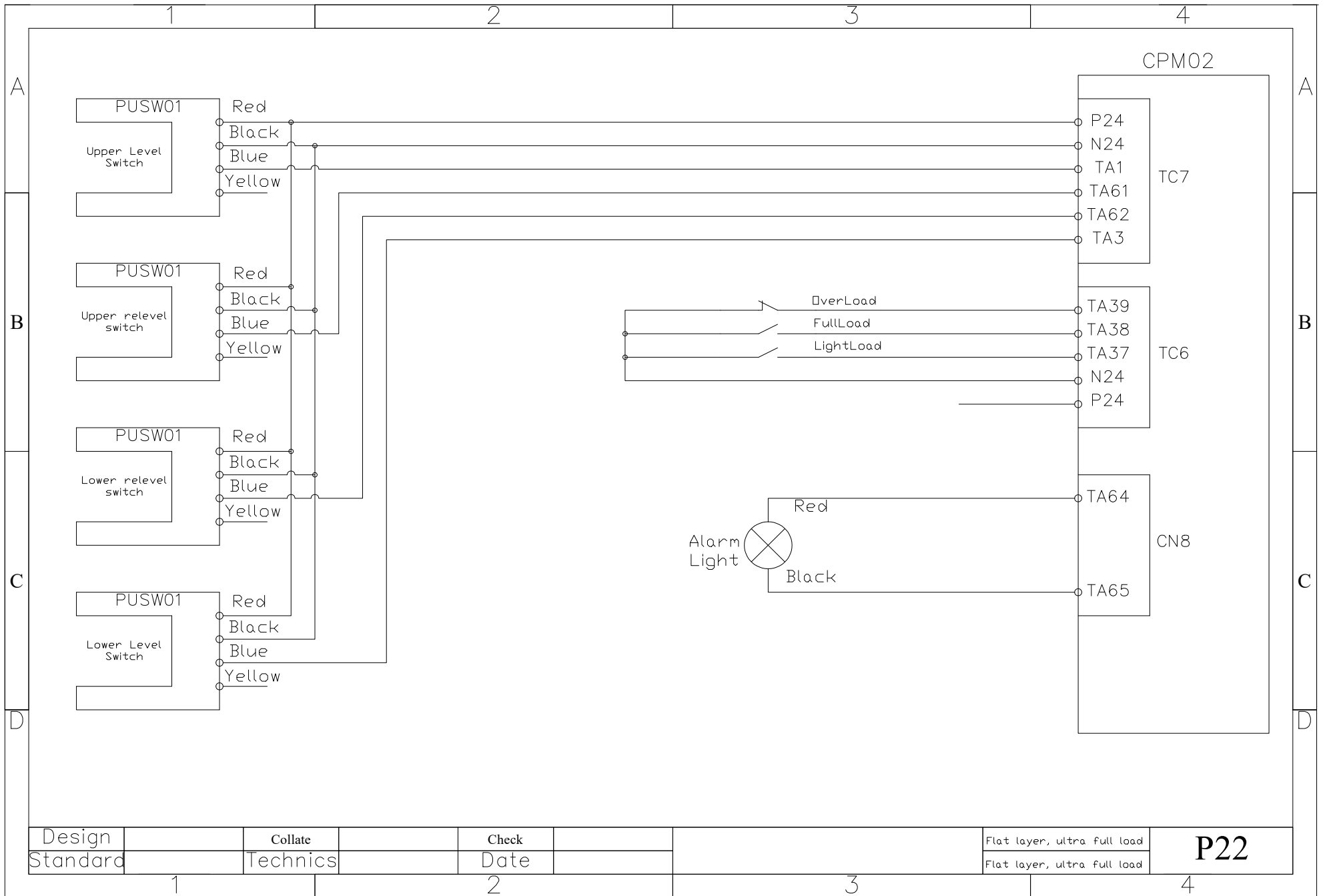
P21

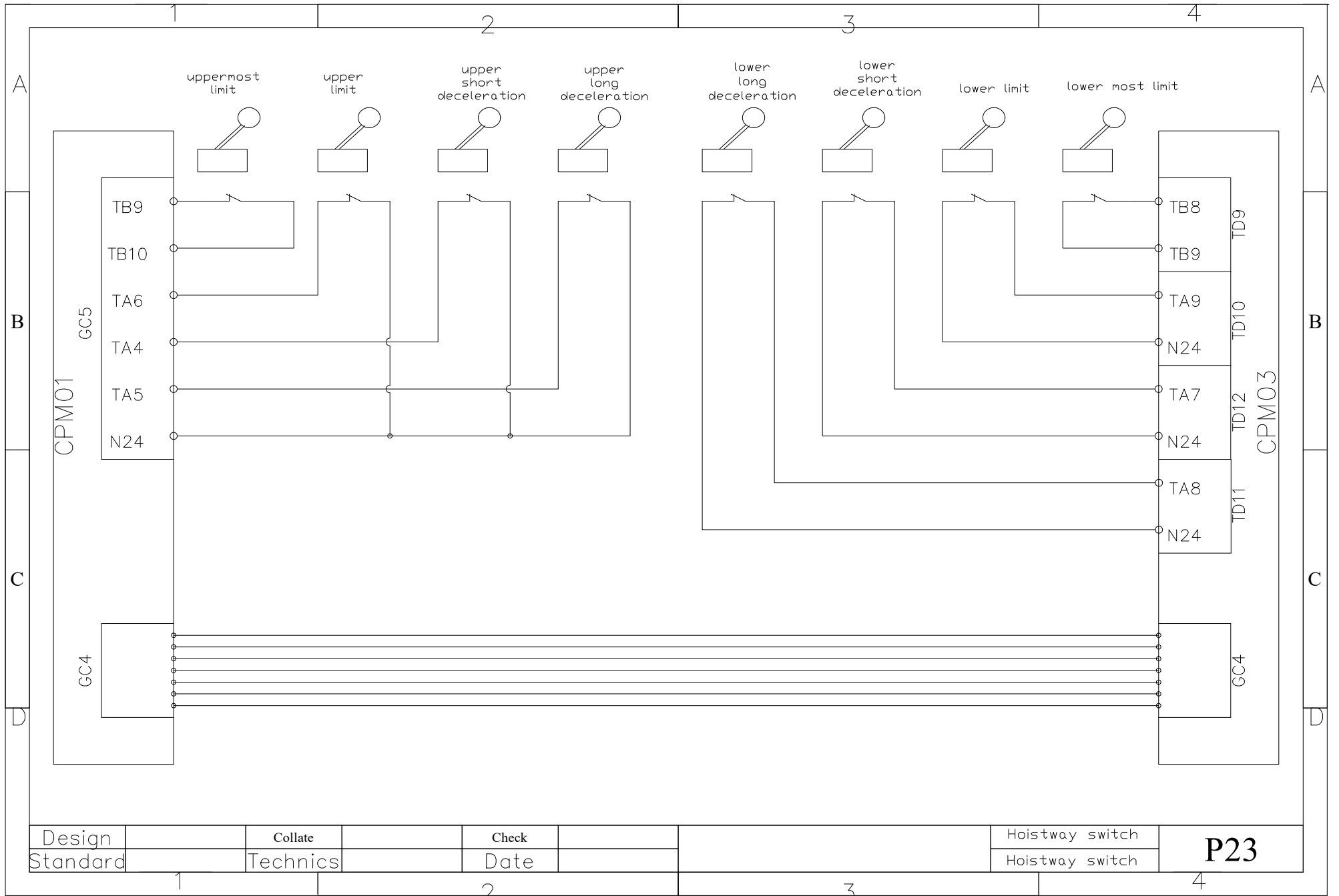
1

2

3

4





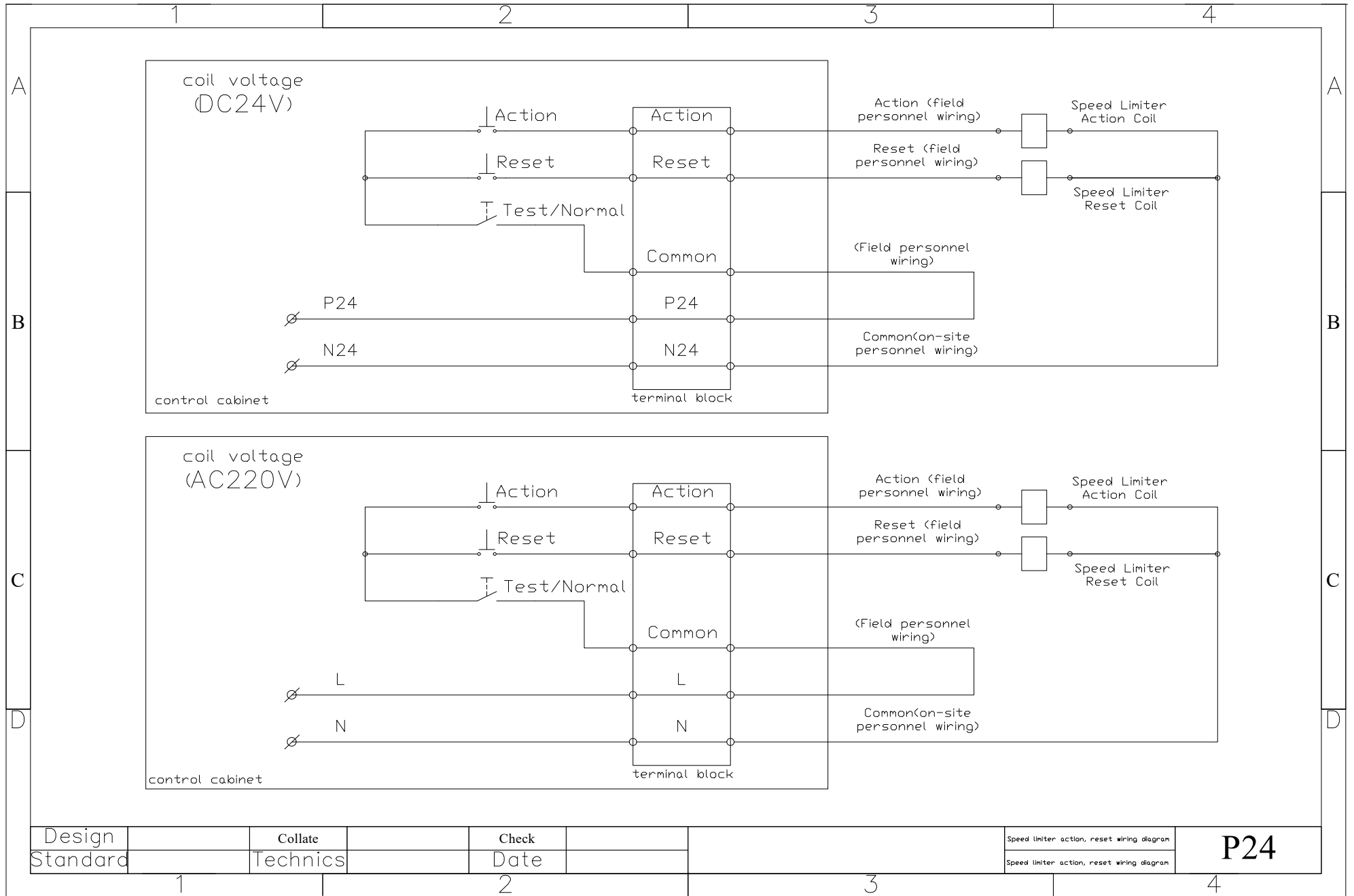
Design		Collate		Check		Hoistway switch	P23
Standard		Technics		Date		Hoistway switch	

1

2

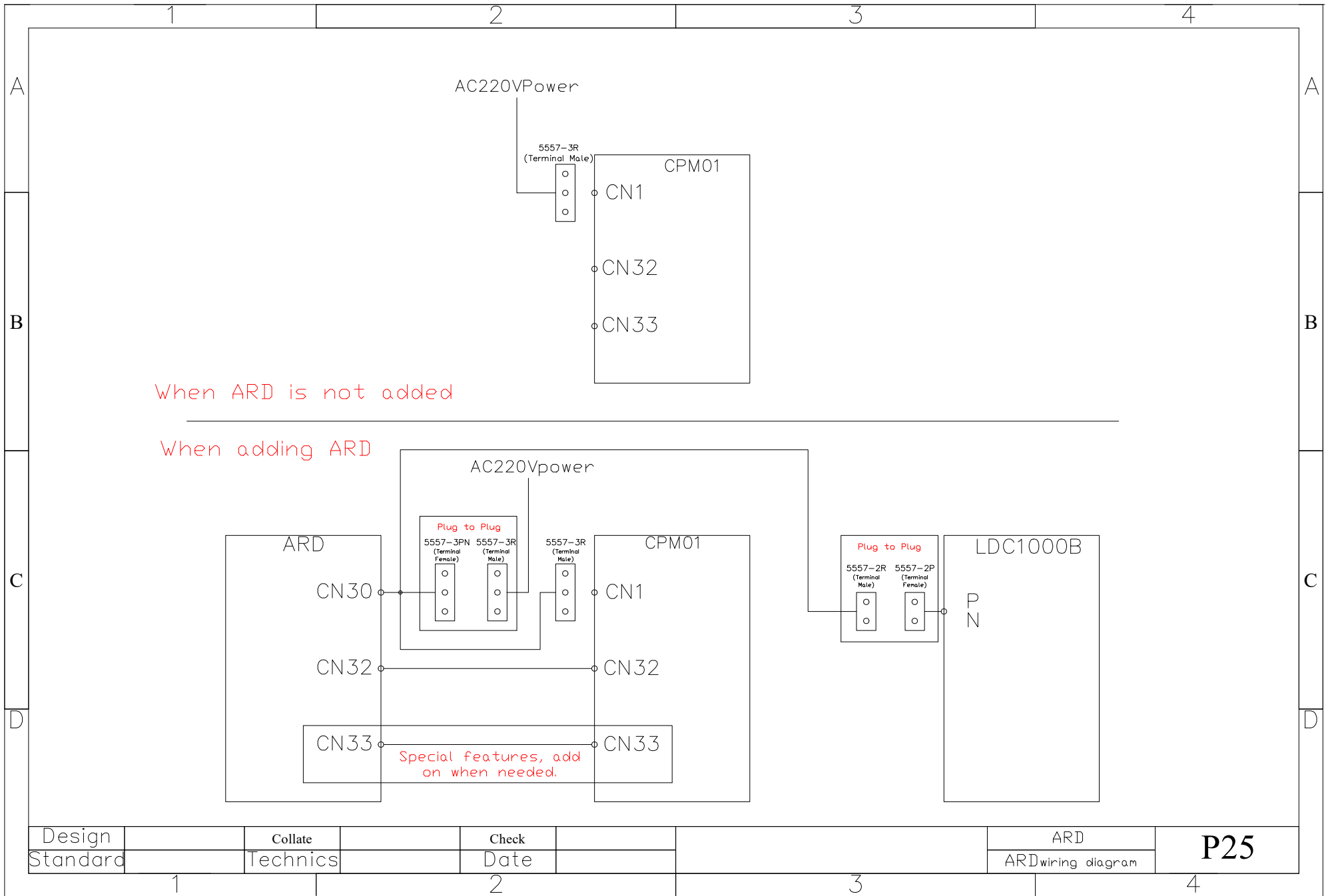
3

4



Design		Collate		Check		Speed limiter action, reset wiring diagram	P24
Standard		Technics		Date		Speed limiter action, reset wiring diagram	

1 2 3 4



Design		Collate		Check		ARD	P25
Standard	1	Technics		Date		ARD wiring diagram	

1

2

3

4

	1	2	3	4		
A	Terminal number	instruction	Terminal number	instruction	Terminal number	instruction
	TA1	Upper doorzone	TA30	Group control communication bus-	TA61	Upper leveling layer
	TA2	Doorzone	TA31	Open door limit 1	TA62	Lower leveling layer
	TA3	Lower doorzone	TA32	Close door limit 1	TA63	JJK Hall Door Detection Switch
	TA4	upper short deceleration	TA33	Light curtain signal 1	TA64	warning light+
	TA5	Upper long deceleration	TA34	Open door limit 2	TA65	warning light-
	TA6	Upper limit	TA35	Close door limit 2		
	TA7	Lower short deceleration	TA36	Light curtain signal 1		
	TA8	Lower long deceleration	TA37	light load		
	TA9	Lower limit	TA38	Fullload		
B	TA10A	Cartop inspection	TA39	Overload		
	TA10	inspection	TA40	Driver		
	TA11	Up button	TA41	Specialized		
	TA12	Down button	TA42	Open command 1, Close command 1 Common		
	TA13	Safety contactor feedback	TA43	Open door command 1		
	TA14	Hall door contactor feedback	TA44	Close door command 1		
	TA15	Car door contactor feedback	TA45	Open command 2, Close command 2 Common		
	TA16	Brake contactor feedback	TA46	Open door command 2		
	TA17	Brake switch feedback 1	TA47	Close door command 2		
	TA18	Running contactor feedback	TA48	Fire signal output		
	TA19	Fire-fighting linkage	TA49			
	TA20	Brake switch feedback 2	TA50			
C	TA21	pre-opening of door	TA51	Emergency lighting power+		
	TA22	Door lock bypass	TA52	Emergency lighting power-		
	TA23	Spare Input X23	TA53	Alarm power +		
	TA24	Out-of-phase detection	TA54	Alarm button		
	TA25	Hallcall communication bus+	TA55	Alarm power-		
	TA26	Hallcall communication bus-				
	TA27	Car communication bus+				
	TA28	Car communication bus-				
D	TA29	Group control communication bus+				
	Design Standard	Collate Technics	Check Date		Terminal Table 1	Terminal Table 1
	1	2	3	4	P26	

Terminal number	instruction	Terminal number	instruction	Terminal number	instruction
TB1	R110	TB29	BR brake coil		
TB2	S110	TB30			
TB3	Control cabinet emergency stop	TB31			
TB4	Disc wheel	TB32	R220 Transformer 220V		
TB5B	Pit Emergency Stop B	TB33	S220 Transformer 220V		
TB5	Pit Emergency Stop	TB34	220V mains L		
TB6	tensioning wheel	TB35	220V mains N		
TB7	Car buffer	TB36	Cartop energy saving relay 220V mains L		
TB8	counterweight buffer	TB37	Car lighting switch 220V mains N		
TB9	Lowerlimit	TB38	Car fan switch 220V mains N		
TB10	Upperlimit	TB39			
TB11	Limiter	TB40	Pit lighting switch 220V mains N		
TB12	safety gear	TB41			
TB13	Cartop Emergency stop	TB42			
TB14	Car Emergency stop				
TB15	safety pin				
TB16	Halldoor lock				
TB17	Cardoor lock1				
TB18	Cardoor lock2				
TB18B	Halldoor lock2				
TB19	Emergency motorized intermediate lead				
TB20				R	Three-phase power inconn
TB21				S	Three-phase power inconn
TB22				T	Three-phase power inconn
TB23				U	Three-phase power inconn
TB24				V	Three-phase power inconn
TB25				W	Three-phase power inconn
TB26				P	Connecting automatic resistors
TB28				B1	Connecting automatic resistors

Design		Collate		Check		Terminal Table 2	P27
Standard		Technics		Date		Terminal Table 2	

1

2

3

4

- X24 CPM communication
- X23 Mainframe overheating protection
- X22 Door lock bypass
- X21 Open the door early, Self-help feedback.
- X20 Brake switch 2 feedback
- X19 fire-fighting linkage
- X18 Output contactor feedback
- X17 Brake switch 1 feedback
- X16 Brake contactor feedback
- X15 Doorlock
- X14 Sealed core contactor feedback
- X13 Backup
- X12 Down
- X11 Up
- X10 overhaul
- X9 outage signal
- X8 lowering deceleration
- X7 lowershort deceleration
- X6 Upper Limit
- X5 Upperlong deceleration
- X4 Uppershort deceleration
- X3 lower doorzone
- X2 doorzone
- X1 upper doorzone

LDC1000B

CN6

E	P	E	P	A	E	B
n	0	n	0	n	n	p
c	w	c	w	c	p	c
o	r	o	e	o	p	o
d	1	d	r	d	u	d
e	2	e	l	e	l	e
r	v	r	v	r	s	r
12V	0V	A	E	B		

CN7

15-pin D-type plug

Encoder interface for asynchronous motors

Synchronous Motor Encoder Interface PG1387

